



**Worklist: 6671**

<u>LAB_CASE</u>	<u>ITEM</u>	<u>ITEM_TYPE</u>	<u>DESCRIPTION</u>	
C2024-0011	2	BCK	AM 28 Blood Multi-Drug Quant Panel 1 by LC-QQQ	
C2024-0035	1	BCK	AM 28 Blood Multi-Drug Quant Panel 1 by LC-QQQ	
C2024-0081	1	BCK	AM 28 Blood Multi-Drug Quant Panel 1 by LC-QQQ	
C2024-0087	1	UCK	AM 28 Urine Multi-Drug Confirmation Panel 1 by LC-	
C2024-0088	1	BCK	AM 28 Blood Multi-Drug Quant Panel 1 by LC-QQQ	
C2024-0092	1	UCK	AM 28 Urine Multi-Drug Confirmation Panel 1 by LC-	
C2024-0098	1	BCK	AM 28 Blood Multi-Drug Quant Panel 1 by LC-QQQ	
C2024-0099	1	BCK	AM 28 Blood Multi-Drug Quant Panel 1 by LC-QQQ	
C2024-0122	1	BCK	AM 28 Blood Multi-Drug Quant Panel 1 by LC-QQQ	
C2024-0128	1	BCK	AM 28 Blood Multi-Drug Quant Panel 1 by LC-QQQ	
C2024-0134	1	BCK	AM 28 Blood Multi-Drug Quant Panel 1 by LC-QQQ	
C2024-0164	1	BCK	AM 28 Blood Multi-Drug Quant Panel 1 by LC-QQQ	

# AM# 28: Multi-Drug Quantitation by LC-MS/MS

Extraction Date: 2/1/24

Plate lot#: 231215

Mobile phase A: 5mM Amm Form + 0.01% FA

Blank Blood Lot: 23J52629

Column: Agilent 120 EC-C18 (2.1x 100-2.7um)

Analyst: Anne Nord

Plate Retest Date: 06/15/2024

Mobile phase B: 0.01% Formic Acid in MeOH

Blank Urine Lot: 1324

LCMS-QQQ ID: 69679

## Pre-Analytic:

- 1. Check levels of mobile phases and needle wash refill as needed. Ensure waste is not full.
- 2. Ensure correct column is installed and begin mobile phase flow allow to equilibrate ~ 30 minutes.
- 3. Create worklist

## Analytic:

1. Remove standards, plate, controls, and samples from cold storage. Allow to reach room temperature.
2. **Urine Hydrolysis: In blank well, add 250µL urine, 40µL BG Turbo, and 100µL Instant Buffer I. Place on plate shaker for 5 minutes.**
3. Using a calibrated pipette, pipette **250µL blood and urine** (if applicable) into wells of analytical (standards) plate. **Pipette ID: P31168J**
4. Pipette **250µL 0.5 M ammonium hydroxide** in wells of analytical plate.
5. Place on shaking incubator at ambient temp., 900rpm for 15 minutes.
6. Transfer **200-450µL of blood+base and urine+base (if applicable)** mixture to corresponding wells of SLE+ plate. Amount transferred: 300
7. Apply positive pressure for approx. 10-15 seconds (or until no liquid remains on top of sorbent). **(Load at 85-100 PSI- Selector to the right).**
8. Wait 5 minutes.
9. Add **900uL ethyl acetate.**
10. Wait 5 minutes.
11. Apply positive pressure for approx. 15 seconds. **(10-15 PSI- Selector to the left).**
12. Add **900uL ethyl acetate.**
13. Wait 5 minutes.
14. Apply positive pressure for approx. 15 seconds. **(10-15 PSI- Selector to the left).**
15. Remove plate containing eluate. Place on SPE Dry and evaporate to dryness at approx. 35°C.  **If run contains urine or at the analyst's discretion, add 50µL 1% HCl in MeOH to wells and place plate cover on plate before drying (optional).**
16. Reconstitute in **100µL 20% LC MeOH** and heat seal plate with foil. Place in autosampler and run worklist.

## Post-Analytic

- 1. Create batch and process data.
- 2. Make necessary changes to integration limits
- 3. Integration linear and R<sup>2</sup> values ≥0.98 for each analyte.
- 4. For unknown samples and controls: response ratio within 20% of average of controls and standards, RT within +/- 5% (tramadol RT +/-2%), S/N for primary transition >10 and secondary transitions >5.
- 5. Did all QCs pass for each analyte? Yes, see comments Add Control data to QC tracking spreadsheet.
- 6. Central File Packet to include: LIMS Worklist, Method Checklist, Calibration and Control Reports.

COMMENTS: *Hands of the Analyst Mikel Buffaloe*

Compounds evaluated	Limitations
Amphetamine	5-100 cal 6, 7 and 8 dropped due to accuracy, qualitative only
Benzoyllecgonine	
Bupropion	5-500 cal 8 dropped due to accuracy
Citalopram	
Cocaine	
Cyclobenzaprine	
Dextromethorphan	
Dextrophan	
Diazepam	
Dihydrocodeine	5-500 cal 8 dropped due to accuracy



Diphenhydramine	
Doxylamine	
Fentanyl	
Fluoro-Fentanyl	
Hydrocodone	
Lorazepam	
Methamphetamine	5-250 cal 7 and 8 dropped due to accuracy
Morphine	
Nordiazepam	
Norfentanyl	
Norhydrocodone	
Noroxycodone	
O-Desmethylvenlafaxine	
<del>Oxazepam</del> Oxazepam	A- <sup>2/8/24</sup>
Oxycodone	
Promethazine	
Quetiapine	
Temazepam	
Trazadone	
Venlafaxine	
Zolpidem	

	1	2	3	4	5	6	7	8	9	10	11	12
A					IS + Cal. 1	IS + QC_1	0035-1	neg urine				
B					IS + Cal. 2	IS + QC_2	0088-1	0087-1				
C					IS + Cal. 3	IS + QC 3	0098-1	0092-1				
D					IS + Cal. 4	IS + QC_4	0099-1					
E					IS + Cal. 5	IS + QC_2	0122-1					
F					IS + Cal. 6	neg blood	0128-1					
G					IS + Cal. 7	0011-2	0134-1					
H					IS + Cal. 8	0081-1	0164-1					

blank in front

plate position 2

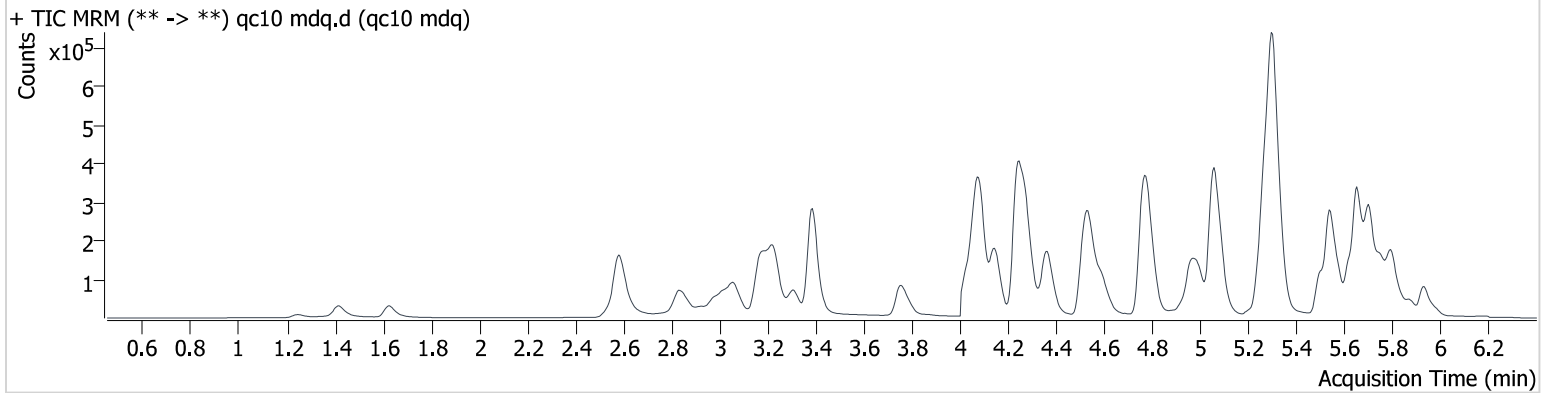
c2024-\_\_\_\_-\_\_

# AM #28 Multi-Drug Quant. Results

Batch results D:\MassHunter\Data\2024\am 27-28\020124\QuantResults\am28.batch.bin  
Calibration Last Update 2/7/2024 10:37:12 AM

<b>Instrument</b>	69679	<b>Data File</b>	qc10 mdq.d
<b>Type</b>	QC	<b>Sample</b>	qc10 mdq
<b>Acq. Method</b>	mdqp1 121523.m	<b>Operator</b>	Anne Nord
<b>Sample Position</b>	P2-A6	<b>Comment</b>	Only drugs and concentrations listed on the laboratory report itself are appropriate to be used for interpretation purposes. Any drugs or values in the notes but not included on the report are used by laboratory personnel to make determinations/reach conclusions within the confines of the methods.
<b>Injection Volume</b>	3		
<b>Acq. Date-Time</b>	2/1/2024 3:18:07 PM		
<b>Sample Info.</b>			

## Sample Chromatogram



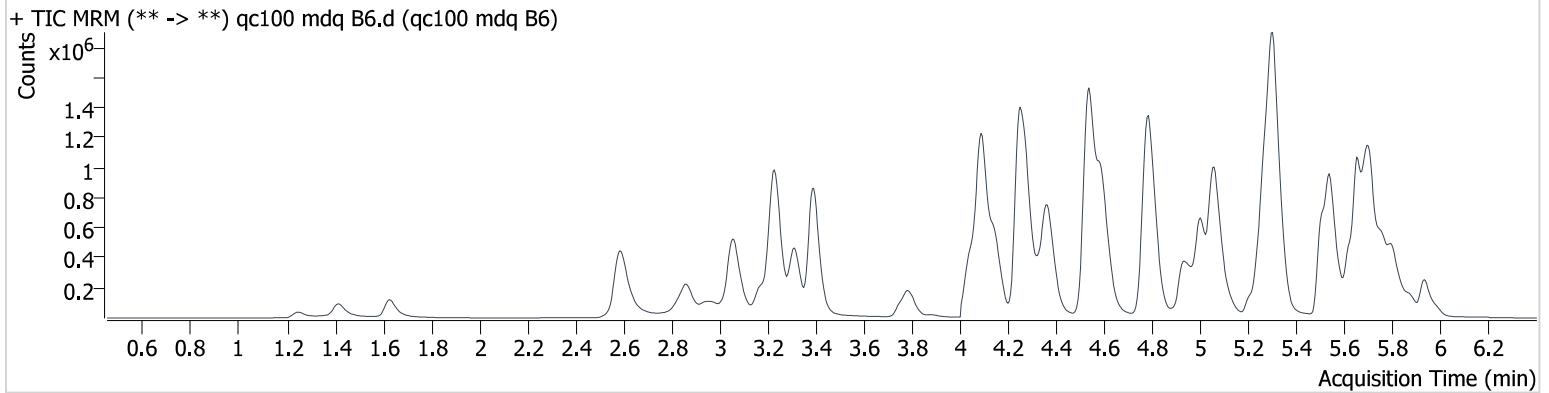
Name	RT	Resp.	S/N	Ratio	S/N	ISTD Resp.	Final Conc.
Amphetamine	3.063	46244	2228.0	277.29	5063.2	139195	9.959 ng/ml
Benzoylcegonine	3.883	2076	30877.1	37.33	94.1	7128	10.160 ng/ml
Bupropion	4.787	97985	5172.8	73.63	∞	277188	9.440 ng/ml
Citalopram	5.250	82092	∞	35.48	10371.0	358226	9.588 ng/ml
Cocaine	4.276	69516	3029.5	42.22	2314.4	431179	10.552 ng/ml
Cyclobenzaprine	5.624	92147	24604.1	9.94	1468.2	281270	10.056 ng/ml
Dextromethorphan	5.283	52139	6799.6	69.09	13216.0	289743	9.462 ng/ml
Dextrorphan	4.150	70389	7354.7	44.75	1444.4	389525	9.783 ng/ml
Diazepam	5.935	32819	3931.4	85.08	4184.1	155987	9.925 ng/ml
Dihydrocodeine	2.575	11669	590.4	65.81	703.0	71818	9.855 ng/ml
Diphenhydramine	5.310	80943	6301.8	291.40	17643.9	1293085	8.398 ng/ml
Doxylamine	4.543	249913	7736.3	92.58	∞	696722	10.498 ng/ml
Fentanyl	5.073	8632	2013.8	129.37	5173.2	412031	0.956 ng/ml
Fluorofentanyl	5.130	7601	29.2	106.96	185.0	4217	0.985 ng/ml
Hydrocodone	3.045	28146	939.9	39.88	652.6	162767	9.553 ng/ml
Lorazepam	5.731	4418	∞	38.84	76.2	36194	10.025 ng/ml
Methamphetamine	3.231	178319	∞	36.85	∞	405309	10.170 ng/ml
Morphine	1.252	4184	1975.6	19.09	101.9	6474	9.980 ng/ml
Nordiazepam	5.884	20435	1630.2	60.19	2561.4	66207	10.413 ng/ml
Norfentanyl	4.096	5359	543.3	30.17	∞	641472	0.970 ng/ml
Norhydrocodone	3.096	3953	∞	20.99	∞	38510	9.172 ng/ml
Noroxycodone	2.947	17401	773.6	55.71	3209.0	59100	10.377 ng/ml
O-Desmethylvenlafaxine	4.094	49185	1121.6	547.24	4595.9	17271	9.833 ng/ml
Oxazepam	5.744	6801	474.6	70.98	12287.8	36194	9.683 ng/ml
Oxycodone	2.860	50263	1956.0	30.20	1375.6	229648	9.782 ng/ml
Promethazine	5.545	94373	1230.8	43.50	4214.5	565537	9.954 ng/ml
Quetiapine	5.505	111154	1854738.2	69.40	12334.8	178705	10.017 ng/ml
Temazepam	5.806	37882	3303.2	29.88	139.9	174189	9.588 ng/ml
Trazodone	5.000	82169	1441.4	130.21	8337.3	451873	9.631 ng/ml
Venlafaxine	5.059	122647	4402.7	37.32	1826.3	697193	9.501 ng/ml
Zolpidem	4.785	169847	9279.8	30.40	17732.4	719919	9.737 ng/ml

# AM #28 Multi-Drug Quant. Results

**Batch results** D:\MassHunter\Data\2024\am 27-28\020124\QuantResults\am28.batch.bin  
**Calibration Last Update** 2/7/2024 10:37:12 AM

<b>Instrument</b>	69679	<b>Data File</b>	qc100 mdq B6.d
<b>Type</b>	QC	<b>Sample</b>	qc100 mdq B6
<b>Acq. Method</b>	mdqp1 121523.m	<b>Operator</b>	Anne Nord
<b>Sample Position</b>	P2-B6	<b>Comment</b>	Only drugs and concentrations listed on the laboratory report itself are appropriate to be used for interpretation purposes. Any drugs or values in the notes but not included on the report are used by laboratory personnel to make determinations/reach conclusions within the confines of the methods.
<b>Injection Volume</b>	3		
<b>Acq. Date-Time</b>	2/1/2024 6:12:16 PM		
<b>Sample Info.</b>			

## Sample Chromatogram



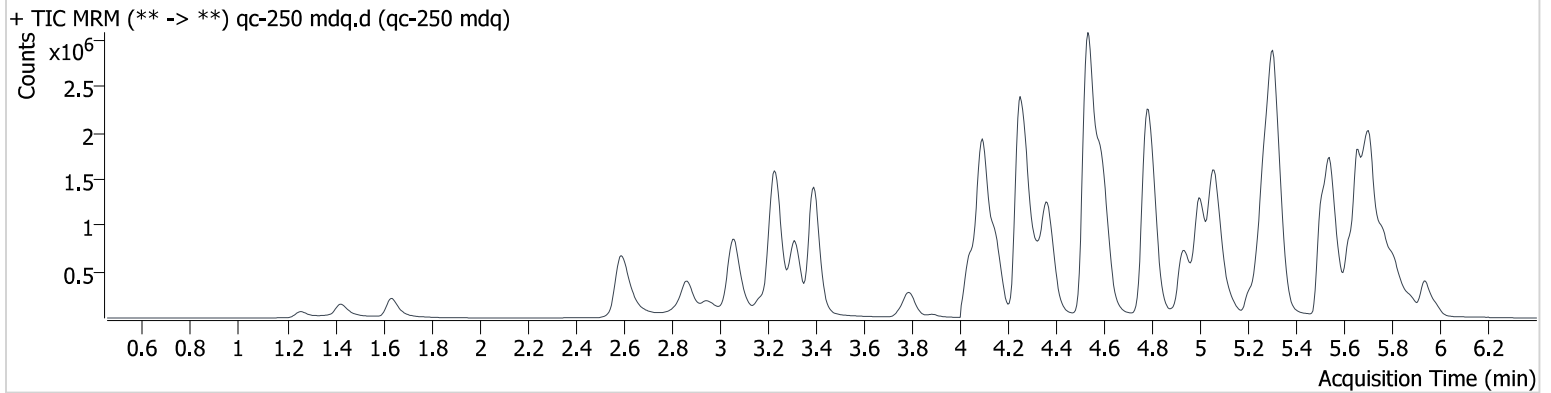
Name	RT	Resp.	S/N	Ratio	S/N	ISTD Resp.	Final Conc.
Amphetamine	3.063	385880	38598.5	269.62	154524.3	144840	86.578 ng/ml
Benzoylcgonine	3.883	24180	83833.9	41.79	1496.6	8392	98.136 ng/ml
Bupropion	4.787	965105	113726.1	73.47	144140.5	295241	93.002 ng/ml
Citalopram	5.250	748477	33919.3	38.79	∞	343834	91.497 ng/ml
Cocaine	4.281	703892	115303.8	43.17	367586.7	472306	101.894 ng/ml
Cyclobenzaprine	5.624	842416	81529.3	9.96	14716.0	271675	95.509 ng/ml
Dextromethorphan	5.283	479257	∞	74.65	612973.7	264828	92.946 ng/ml
Dextrorphan	4.150	720256	50023.4	45.20	147483.9	400186	95.179 ng/ml
Diazepam	5.935	322216	43746.3	84.84	72902.2	148677	100.331 ng/ml
Dihydrocodeine	2.570	118065	1568.5	67.27	2577.4	78000	99.302 ng/ml
Diphenhydramine	5.310	771463	87249.9	298.69	946099.1	1270853	83.032 ng/ml
Doxylamine	4.538	2682979	248988.3	94.51	168863.1	798919	102.021 ng/ml
Fentanyl	5.078	82030	7814.2	142.00	20972.8	388304	9.226 ng/ml
Fluorofentanyl	5.130	83476	79.2	112.35	716.9	4343	9.812 ng/ml
Hydrocodone	3.045	294770	∞	40.54	3975.1	170026	100.340 ng/ml
Lorazepam	5.737	32769	∞	37.06	319.9	24695	96.415 ng/ml
Methamphetamine	3.231	1394610	∞	38.06	2455.1	455007	95.502 ng/ml
Morphine	1.252	42046	10062.0	19.28	920.9	6684	98.380 ng/ml
Nordiazepam	5.884	159735	23589.5	61.87	∞	55114	98.071 ng/ml
Norfentanyl	4.101	45106	8131.2	29.80	14564.6	542169	9.589 ng/ml
Norhydrocodone	3.096	49339	6470.2	24.37	∞	46645	87.554 ng/ml
Noroxycodone	2.947	182468	∞	52.59	∞	60294	108.018 ng/ml
O-Desmethylvenlafaxine	4.094	482657	9718.4	536.09	116821.4	17596	94.872 ng/ml
Oxazepam	5.739	47964	10344.9	66.42	9972.4	24695	97.586 ng/ml
Oxycodone	2.860	537455	∞	29.85	∞	250846	99.287 ng/ml
Promethazine	5.545	973255	441024.7	41.91	31714.8	560128	98.829 ng/ml
Quetiapine	5.505	1148831	152433.9	64.83	202628.7	187459	100.198 ng/ml
Temazepam	5.806	310669	77267.7	30.63	1513.3	134460	97.266 ng/ml
Trazodone	5.006	855269	∞	128.99	146836.9	482354	92.115 ng/ml
Venlafaxine	5.059	1372006	490461.1	36.34	52854.9	746484	94.390 ng/ml
Zolpidem	4.785	1807573	411329.7	30.64	91960.3	770916	101.543 ng/ml

# AM #28 Multi-Drug Quant. Results

**Batch results** D:\MassHunter\Data\2024\am 27-28\020124\QuantResults\am28.batch.bin  
**Calibration Last Update** 2/7/2024 10:37:12 AM

<b>Instrument</b>	69679	<b>Data File</b>	qc-250 mdq.d
<b>Type</b>	QC	<b>Sample</b>	qc-250 mdq
<b>Acq. Method</b>	mdqp1 121523.m	<b>Operator</b>	Anne Nord
<b>Sample Position</b>	P2-C6	<b>Comment</b>	Only drugs and concentrations listed on the laboratory report itself are appropriate to be used for interpretation purposes. Any drugs or values in the notes but not included on the report are used by laboratory personnel to make determinations/reach conclusions within the confines of the methods.
<b>Injection Volume</b>	3		
<b>Acq. Date-Time</b>	2/1/2024 3:26:50 PM		
<b>Sample Info.</b>			

## Sample Chromatogram



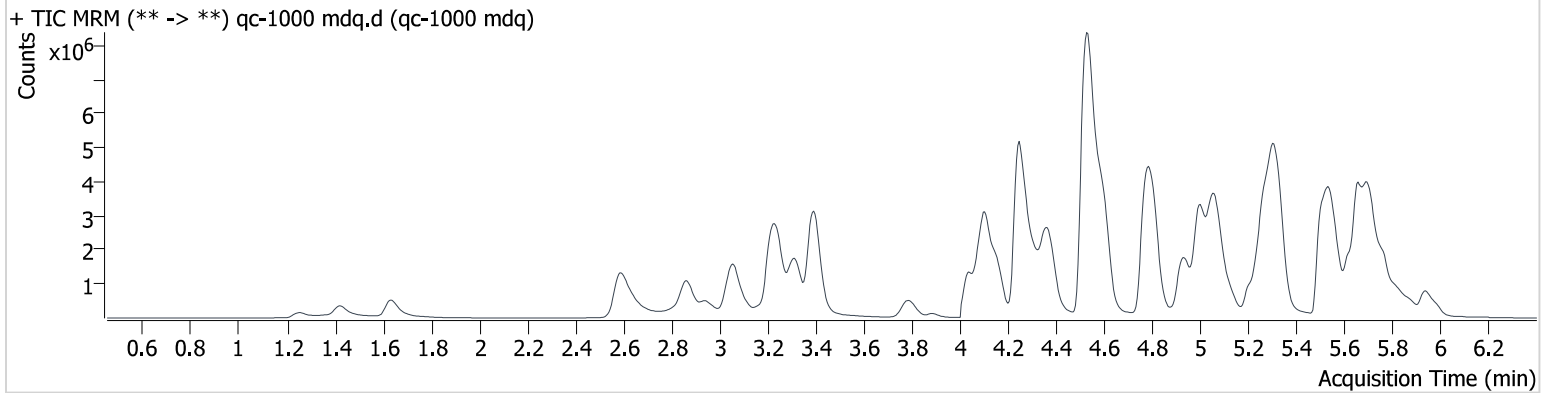
Name	RT	Resp.	S/N	Ratio	S/N	ISTD Resp.	Final Conc.
Amphetamine	3.063	632560	113518.6	266.59	120627.6	115375	179.179 ng/ml
Benzoylcegonine	3.888	53158	455463.9	41.83	8060.2	7900	228.824 ng/ml
Bupropion	4.787	1791252	222905.2	73.44	172405.9	231171	221.403 ng/ml
Citalopram	5.250	1381613	338449.9	39.44	1218902.1	256099	226.828 ng/ml
Cocaine	4.281	1335426	381796.0	43.85	66866.8	377877	242.345 ng/ml
Cyclobenzaprine	5.624	1760115	187657.0	9.95	26940.0	227191	238.685 ng/ml
Dextromethorphan	5.283	901084	8036821.2	73.66	50677.3	200531	230.424 ng/ml
Dextrorphan	4.150	1437135	68450.2	44.65	456053.9	320168	236.999 ng/ml
Diazepam	5.940	611984	100487.9	85.20	14974.4	114821	246.447 ng/ml
Dihydrocodeine	2.575	230515	1173.5	67.13	2076.2	68314	222.479 ng/ml
Diphenhydramine	5.310	1437337	∞	305.87	47817947.9	954544	206.235 ng/ml
Doxylamine	4.533	5654399	1798896.1	95.25	∞	698814	246.439 ng/ml
Fentanyl	5.078	178542	25606.8	137.87	60511.1	320165	24.280 ng/ml
Fluorofentanyl	5.124	196571	205735.8	114.20	14554.4	4232	23.611 ng/ml
Hydrocodone	3.045	599183	∞	40.06	∞	144508	240.685 ng/ml
Lorazepam	5.737	54474	69862.9	38.02	8586.6	15234	257.666 ng/ml
Methamphetamine	3.237	2526505	∞	39.01	85420.9	381685	211.040 ng/ml
Morphine	1.257	83348	14670.0	19.40	4797.4	5620	232.135 ng/ml
Nordiazepam	5.884	272594	11936.6	61.63	15395.0	38382	240.372 ng/ml
Norfentanyl	4.106	71458	14378.0	30.56	41773.4	342310	24.050 ng/ml
Norhydrocodone	3.101	102316	5318.1	25.65	3270.0	37016	227.591 ng/ml
Noroxycodone	2.947	354207	∞	51.15	∞	49158	257.387 ng/ml
O-Desmethylvenlafaxine	4.094	859417	18664.5	534.45	179232.3	12771	232.777 ng/ml
Oxazepam	5.744	75387	∞	68.68	6991.3	15234	248.229 ng/ml
Oxycodone	2.865	1095841	∞	29.38	∞	213442	238.477 ng/ml
Promethazine	5.545	2242906	79011.9	41.35	188937.4	518974	245.057 ng/ml
Quetiapine	5.505	2363419	288836.9	63.89	119635.0	148014	261.337 ng/ml
Temazepam	5.811	490039	135500.7	31.51	∞	81071	253.686 ng/ml
Trazodone	5.000	1811571	83932.8	129.81	71614.5	394081	238.490 ng/ml
Venlafaxine	5.059	2869395	143050.0	36.88	92150.8	614714	238.927 ng/ml
Zolpidem	4.780	3551141	128017.4	30.93	1012638.5	635372	242.786 ng/ml

# AM #28 Multi-Drug Quant. Results

**Batch results** D:\MassHunter\Data\2024\am 27-28\020124\QuantResults\am28.batch.bin  
**Calibration Last Update** 2/7/2024 10:37:12 AM

<b>Instrument</b>	69679	<b>Data File</b>	qc-1000 mdq.d
<b>Type</b>	QC	<b>Sample</b>	qc-1000 mdq
<b>Acq. Method</b>	mdqp1 121523.m	<b>Operator</b>	Anne Nord
<b>Sample Position</b>	P2-D6	<b>Comment</b>	Only drugs and concentrations listed on the laboratory report itself are appropriate to be used for interpretation purposes. Any drugs or values in the notes but not included on the report are used by laboratory personnel to make determinations/reach conclusions within the confines of the methods.
<b>Injection Volume</b>	3		
<b>Acq. Date-Time</b>	2/1/2024 3:35:32 PM		
<b>Sample Info.</b>			

## Sample Chromatogram



Name	RT	Resp.	S/N	Ratio	S/N	ISTD Resp.	Final Conc.
Amphetamine	3.068	1166075	43761.9	262.19	183747.7	89696	426.178 ng/ml
Benzoylcgonine	3.883	209954	350333.0	42.41	7575.5	6953	1025.989 ng/ml
Bupropion	4.797	3786706	74696.0	70.02	451539.9	146826	738.532 ng/ml
Citalopram	5.244	2666494	330650.7	39.42	222268.8	127316	880.732 ng/ml
Cocaine	4.276	2987589	198321.3	43.81	140660.4	220820	929.284 ng/ml
Cyclobenzaprine	5.624	3738941	1394519.1	10.06	69581.8	121330	949.533 ng/ml
Dextromethorphan	5.283	1690427	202816.5	74.37	580639.7	94199	919.494 ng/ml
Dextrorphan	4.150	3702343	623642.7	45.28	201809.3	205052	952.563 ng/ml
Diazepam	5.940	1536477	28415.1	84.90	38820.0	74401	954.300 ng/ml
Dihydrocodeine	2.570	645929	9905.4	66.07	318.4	60575	705.009 ng/ml
Diphenhydramine	5.320	3055359	81631.5	322.95	705246.8	512380	817.256 ng/ml
Doxylamine	4.528	16955408	1630871.7	97.00	∞	583258	886.545 ng/ml
Fentanyl	5.083	477858	93332.2	149.27	81077.6	196569	105.690 ng/ml
Fluorofentanyl	5.124	809784	428768.1	109.89	14155.8	3668	111.945 ng/ml
Hydrocodone	3.045	1758965	∞	40.32	∞	116287	879.365 ng/ml
Lorazepam	5.737	132927	8778.7	40.10	6459.2	9595	994.579 ng/ml
Methamphetamine	3.231	5692211	800415.5	38.51	6155.9	377162	486.464 ng/ml
Morphine	1.252	251242	19905.4	16.69	9316.5	4086	963.022 ng/ml
Nordiazepam	5.890	521869	22110.0	62.12	76611.3	18221	969.441 ng/ml
Norfentanyl	4.111	86242	168447.5	30.73	16101.9	89849	110.553 ng/ml
Norhydrocodone	3.101	284981	16915.9	27.71	5655.8	22733	1029.548 ng/ml
Noroxycodone	2.942	977789	∞	50.78	∞	36795	949.653 ng/ml
O-Desmethylvenlafaxine	4.104	1461778	54377.3	542.79	65135.7	5591	904.385 ng/ml
Oxazepam	5.744	184105	148850.3	71.75	11981.2	9595	961.679 ng/ml
Oxycodone	2.860	3477725	∞	29.57	9410.4	184823	875.085 ng/ml
Promethazine	5.545	6566029	97951.1	39.02	353038.6	360297	1031.695 ng/ml
Quetiapine	5.505	6121533	∞	61.51	1459921.1	109433	915.955 ng/ml
Temazepam	5.816	850986	62846.3	32.13	70267.3	35177	1013.887 ng/ml
Trazodone	5.000	4817215	260505.7	130.40	440839.6	259332	963.074 ng/ml
Venlafaxine	5.059	8701798	120677.4	35.26	122257.3	438861	1013.238 ng/ml
Zolpidem	4.785	9613032	298312.9	30.73	246203.4	489254	854.858 ng/ml

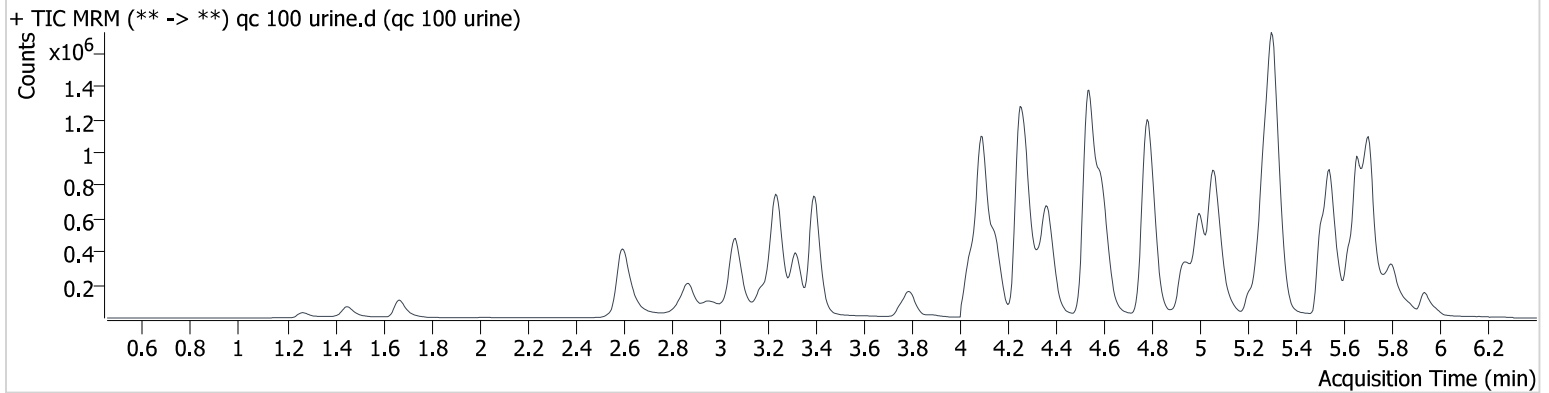


# AM #28 Multi-Drug Quant. Results

**Batch results** D:\MassHunter\Data\2024\am 27-28\020124\QuantResults\am28.batch.bin  
**Calibration Last Update** 2/7/2024 10:37:12 AM

<b>Instrument</b>	69679	<b>Data File</b>	qc 100 urine.d
<b>Type</b>	QC	<b>Sample</b>	qc 100 urine
<b>Acq. Method</b>	mdqp1 121523.m	<b>Operator</b>	Anne Nord
<b>Sample Position</b>	P2-E6	<b>Comment</b>	Only drugs and concentrations listed on the laboratory report itself are appropriate to be used for interpretation purposes. Any drugs or values in the notes but not included on the report are used by laboratory personnel to make determinations/reach conclusions within the confines of the methods.
<b>Injection Volume</b>	3		
<b>Acq. Date-Time</b>	2/1/2024 3:52:59 PM		
<b>Sample Info.</b>			

## Sample Chromatogram



Name	RT	Resp.	S/N	Ratio	S/N	ISTD Resp.	Final Conc.
Amphetamine	3.068	360674	36595.8	269.19	13085.0	130465	89.874 ng/ml
Benzoylcegonine	3.888	19351	46090.2	41.75	2411.8	6823	96.604 ng/ml
Bupropion	4.787	824216	113212.4	73.83	27710.8	256790	91.306 ng/ml
Citalopram	5.250	668915	41159.9	37.77	18228.2	296963	94.679 ng/ml
Cocaine	4.281	620734	15181.5	42.87	9839.8	406526	104.409 ng/ml
Cyclobenzaprine	5.624	802827	∞	10.12	11207.3	266240	92.878 ng/ml
Dextromethorphan	5.283	443591	50216.6	74.58	172711.3	250102	91.099 ng/ml
Dextrorphan	4.150	639371	31849.1	44.87	43254.9	351197	96.273 ng/ml
Diazepam	5.940	186339	5485.5	84.67	5530.2	85737	100.616 ng/ml
Dihydrocodeine	2.580	108840	403.8	66.53	671.7	71408	100.000 ng/ml
Diphenhydramine	5.310	683675	2263529.0	298.05	∞	1120424	83.464 ng/ml
Doxylamine	4.538	2369396	87373.0	94.88	132260.9	705106	102.084 ng/ml
Fentanyl	5.073	82916	19998.2	139.40	9541.0	400615	9.040 ng/ml
Fluorofentanyl	5.124	83114	24187.2	109.38	408.1	4658	9.114 ng/ml
Hydrocodone	3.050	262876	∞	39.88	∞	152983	99.448 ng/ml
Lorazepam	5.731	15501	984.2	36.98	140.4	10465	107.477 ng/ml
Methamphetamine	3.242	1054538	∞	38.35	∞	381716	85.672 ng/ml
Morphine	1.267	34158	8197.2	19.45	832.3	5607	95.270 ng/ml
Nordiazepam	5.879	56058	6288.3	62.96	3578.2	20352	93.200 ng/ml
Norfentanyl	4.101	38011	6508.3	30.16	19403.2	461144	9.501 ng/ml
Norhydrocodone	3.107	30714	1262.7	20.98	∞	34704	73.379 ng/ml
Noroxycodone	2.952	163795	∞	52.60	∞	59208	98.731 ng/ml
O-Desmethylvenlafaxine	4.094	427430	2880.5	534.88	65944.2	15573	94.928 ng/ml
Oxazepam	5.739	18301	117.7	68.54	123.3	10465	87.893 ng/ml
Oxycodone	2.870	495524	∞	30.08	4862.9	228220	100.622 ng/ml
Promethazine	5.545	999647	47045.9	41.57	46106.9	587532	96.785 ng/ml
Quetiapine	5.505	987516	498161.6	64.54	188854.7	156064	103.460 ng/ml
Temazepam	5.806	209133	∞	32.33	1179.8	84679	103.936 ng/ml
Trazodone	5.000	818626	31550.6	128.79	219571.8	457256	93.006 ng/ml
Venlafaxine	5.059	1177672	103417.9	37.16	12178.7	645460	93.705 ng/ml
Zolpidem	4.780	1614105	∞	29.80	16924.0	678367	103.053 ng/ml

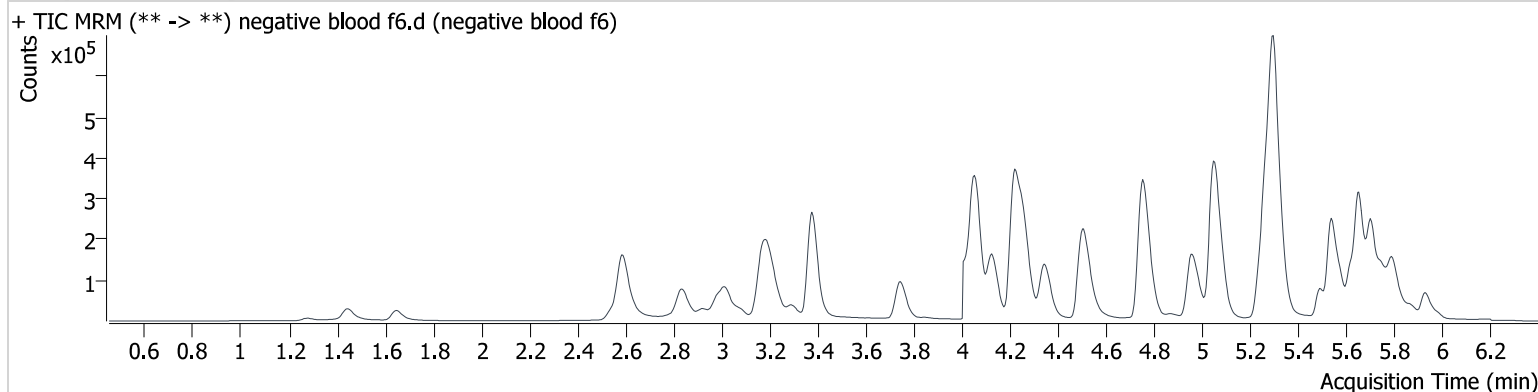
# AM #28 Multi-Drug Quant. Results

**Batch results** D:\MassHunter\Data\2024\am 27-28\020124\QuantResults\am28.batch.bin  
**Calibration Last Update** 2/7/2024 10:37:12 AM

**Instrument** 69679  
**Type** Sample  
**Acq. Method** mdqp1 121523.m  
**Sample Position** P2-F6  
**Injection Volume** 3  
**Acq. Date-Time** 2/1/2024 4:01:42 PM  
**Sample Info.**

**Data File** negative blood f6.d  
**Sample** negative blood f6  
**Operator** Anne Nord  
**Comment** Only drugs and concentrations listed on the laboratory report itself are appropriate to be used for interpretation purposes. Any drugs or values in the notes but not included on the report are used by laboratory personnel to make determinations/reach conclusions within the confines of the methods.

## Sample Chromatogram





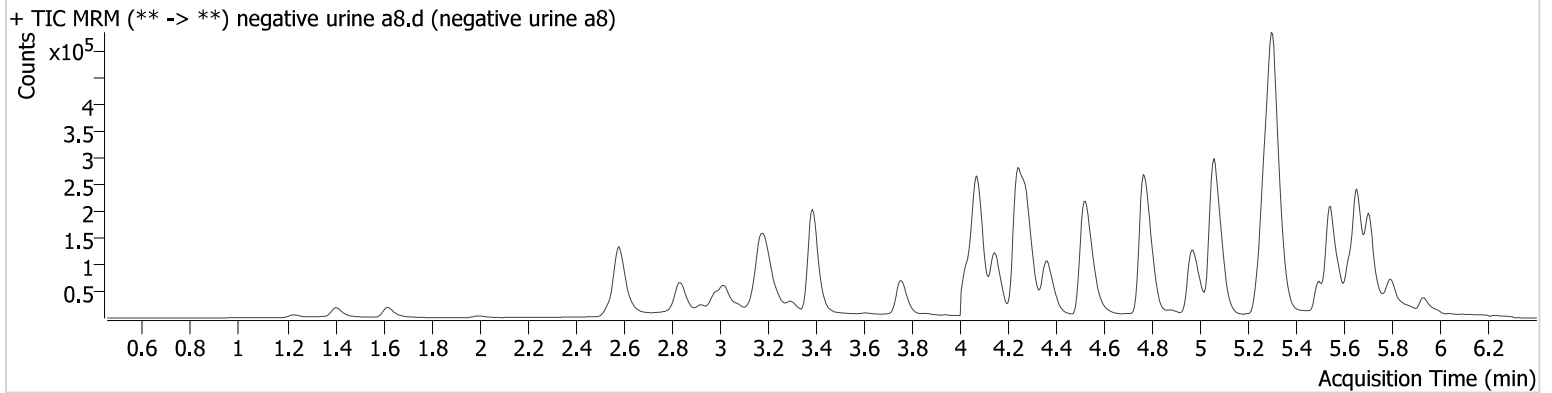
# AM #28 Multi-Drug Quant. Results

**Batch results** D:\MassHunter\Data\2024\am 27-28\020124\QuantResults\am28.batch.bin  
**Calibration Last Update** 2/7/2024 10:37:12 AM

**Instrument** 69679  
**Type** Sample  
**Acq. Method** mdqp1 121523.m  
**Sample Position** P2-A8  
**Injection Volume** 3  
**Acq. Date-Time** 2/1/2024 5:37:26 PM  
**Sample Info.**

**Data File** negative urine a8.d  
**Sample** negative urine a8  
**Operator** Anne Nord  
**Comment** Only drugs and concentrations listed on the laboratory report itself are appropriate to be used for interpretation purposes. Any drugs or values in the notes but not included on the report are used by laboratory personnel to make determinations/reach conclusions within the confines of the methods.

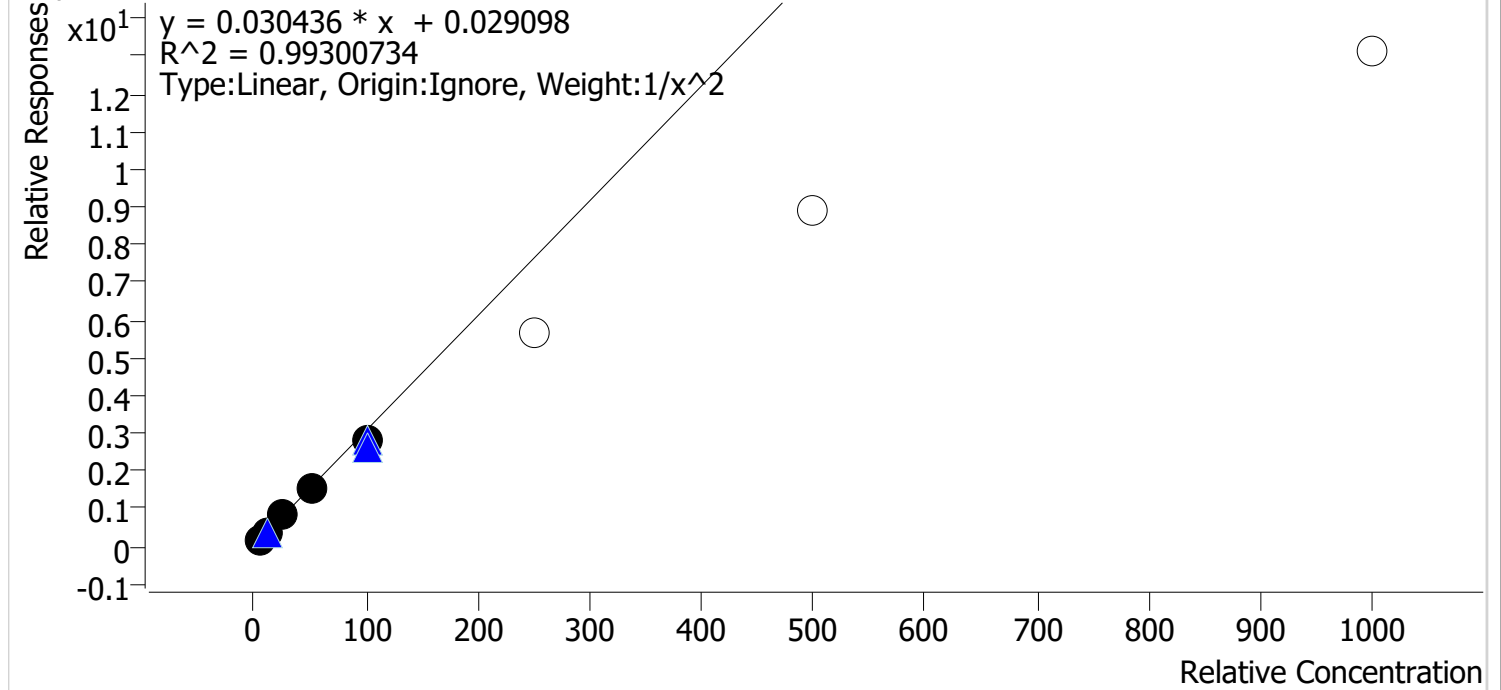
## Sample Chromatogram



# Compound Calibration Report

**Batch results** D:\MassHunter\Data\2024\am 27-28\020124\QuantResults\am28.batch.bin  
**Last Cal. Update** 2/7/2024 10:37 AM  
**Analyst Name** ISP\datastor  
**Analyte** Amphetamine **Internal Standard** Amphetamine-D11

Amphetamine - 8 Levels, 5 Levels Used, 8 Points, 5 Points Used, 5 QCs

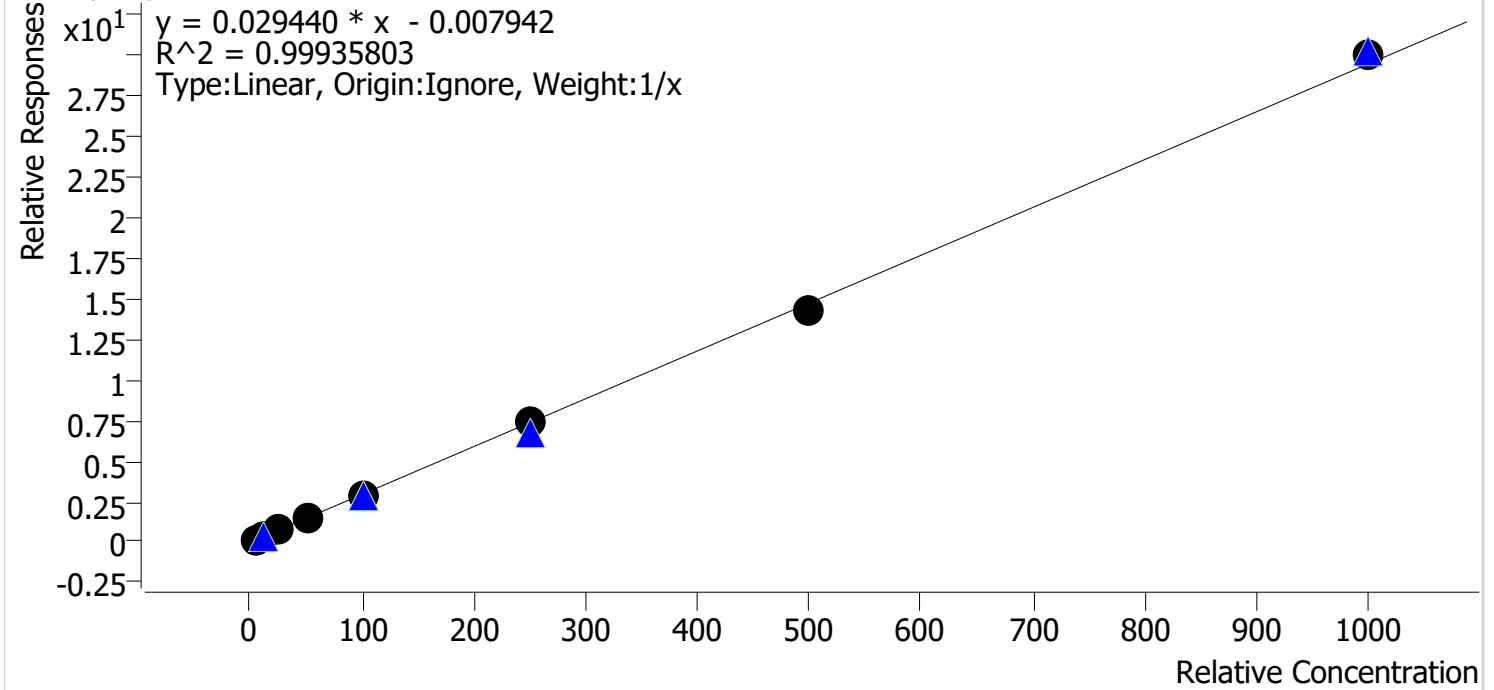


Sample	Level	Enabled	Expected Concentration	Final Concentration	Accuracy
cal 1 mdq	1	✓	5.0	4.8	96.3
cal 2 mdq	2	✓	10.0	10.6	105.7
cal 3 mdq	3	✓	25.0	26.5	105.8
cal 4 mdq	4	✓	50.0	50.7	101.5
cal 5 mdq	5	✓	100.0	90.7	90.7
cal 6 mdq	6	✗	250.0	183.9	73.5
cal 7 mdq	7	✗	500.0	293.1	58.6
cal 8 mdq	8	✗	1000.0	429.9	43.0

# Compound Calibration Report

**Batch results** D:\MassHunter\Data\2024\am 27-28\020124\QuantResults\am28.batch.bin  
**Last Cal. Update** 2/7/2024 10:37 AM  
**Analyst Name** ISP\datastor  
**Analyte** Benzoylecgonine **Internal Standard** Benzoylecgonine-d8

Benzoylecgonine - 8 Levels, 8 Levels Used, 8 Points, 8 Points Used, 5 QCs

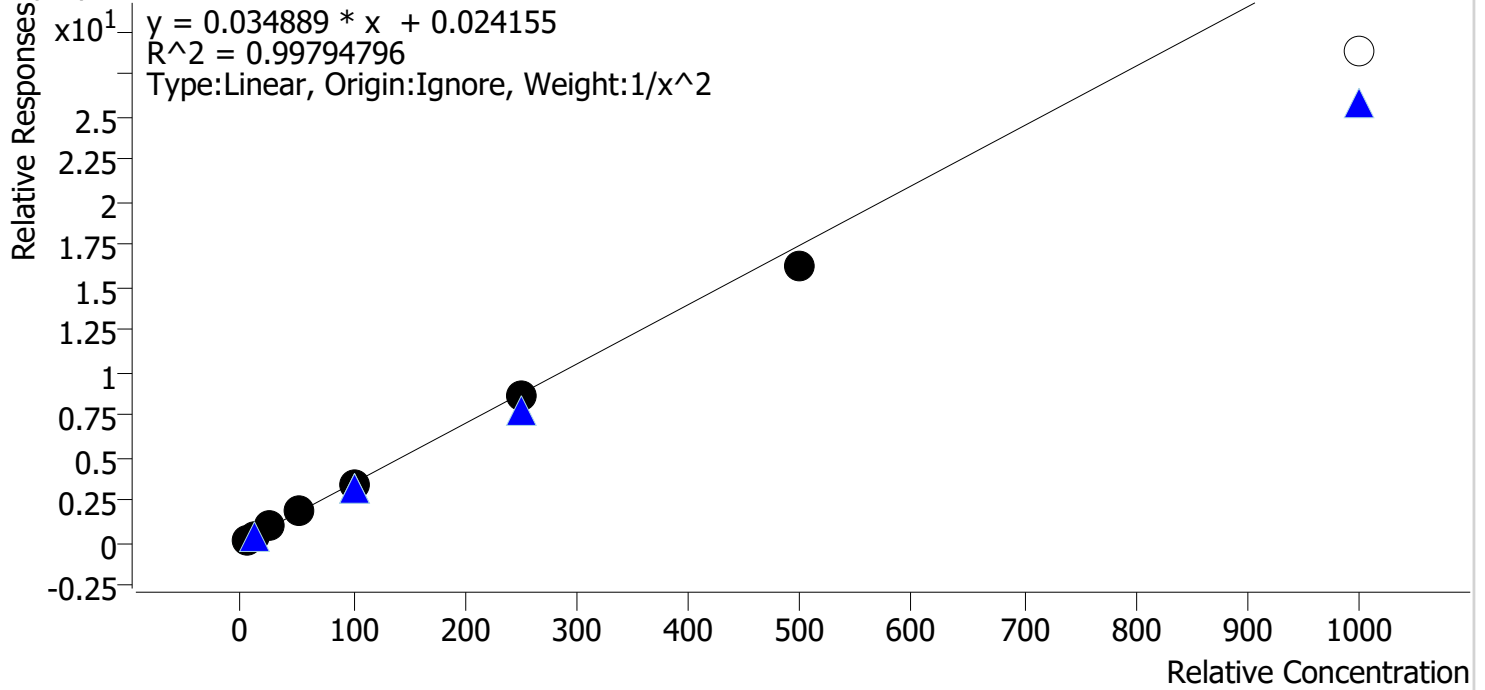


Sample	Level	Enabled	Expected Concentration	Final Concentration	Accuracy
cal 1 mdq	1	✓	5.0	5.1	101.4
cal 2 mdq	2	✓	10.0	10.3	102.8
cal 3 mdq	3	✓	25.0	24.7	98.8
cal 4 mdq	4	✓	50.0	49.5	99.1
cal 5 mdq	5	✓	100.0	98.7	98.7
cal 6 mdq	6	✓	250.0	253.7	101.5
cal 7 mdq	7	✓	500.0	480.7	96.1
cal 8 mdq	8	✓	1000.0	1017.4	101.7

# Compound Calibration Report

**Batch results** D:\MassHunter\Data\2024\am 27-28\020124\QuantResults\am28.batch.bin  
**Last Cal. Update** 2/7/2024 10:37 AM  
**Analyst Name** ISP\datastor  
**Analyte** Bupropion **Internal Standard** Bupropion-D9

Bupropion - 8 Levels, 7 Levels Used, 8 Points, 7 Points Used, 5 QCs

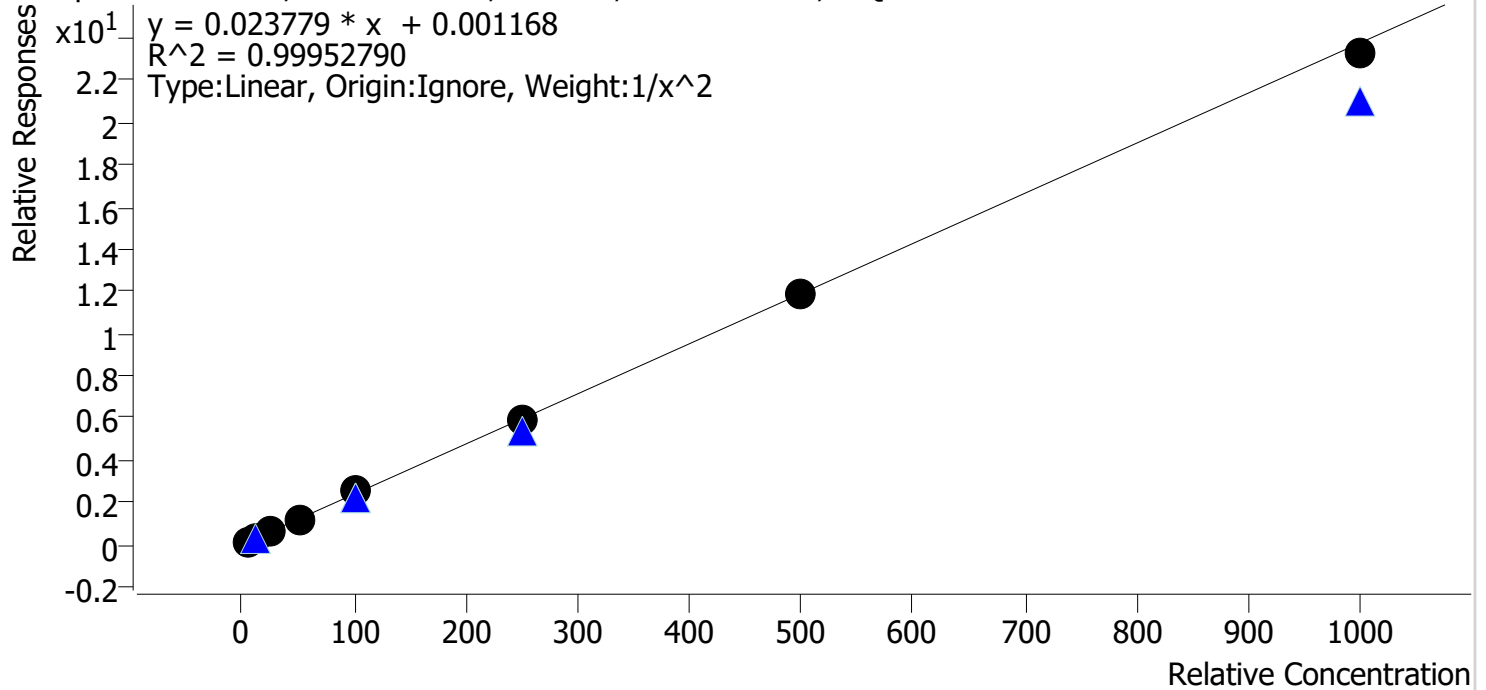


Sample	Level	Enabled	Expected Concentration	Final Concentration	Accuracy
cal 1 mdq	1	✓	5.0	4.9	97.8
cal 2 mdq	2	✓	10.0	10.2	102.3
cal 3 mdq	3	✓	25.0	25.8	103.4
cal 4 mdq	4	✓	50.0	52.1	104.3
cal 5 mdq	5	✓	100.0	100.2	100.2
cal 6 mdq	6	✓	250.0	247.2	98.9
cal 7 mdq	7	✓	500.0	465.6	93.1
cal 8 mdq	8	✗	1000.0	824.8	82.5

# Compound Calibration Report

**Batch results** D:\MassHunter\Data\2024\am 27-28\020124\QuantResults\am28.batch.bin  
**Last Cal. Update** 2/7/2024 10:37 AM  
**Analyst Name** ISP\datastor  
**Analyte** Citalopram **Internal Standard** Citalopram-D6

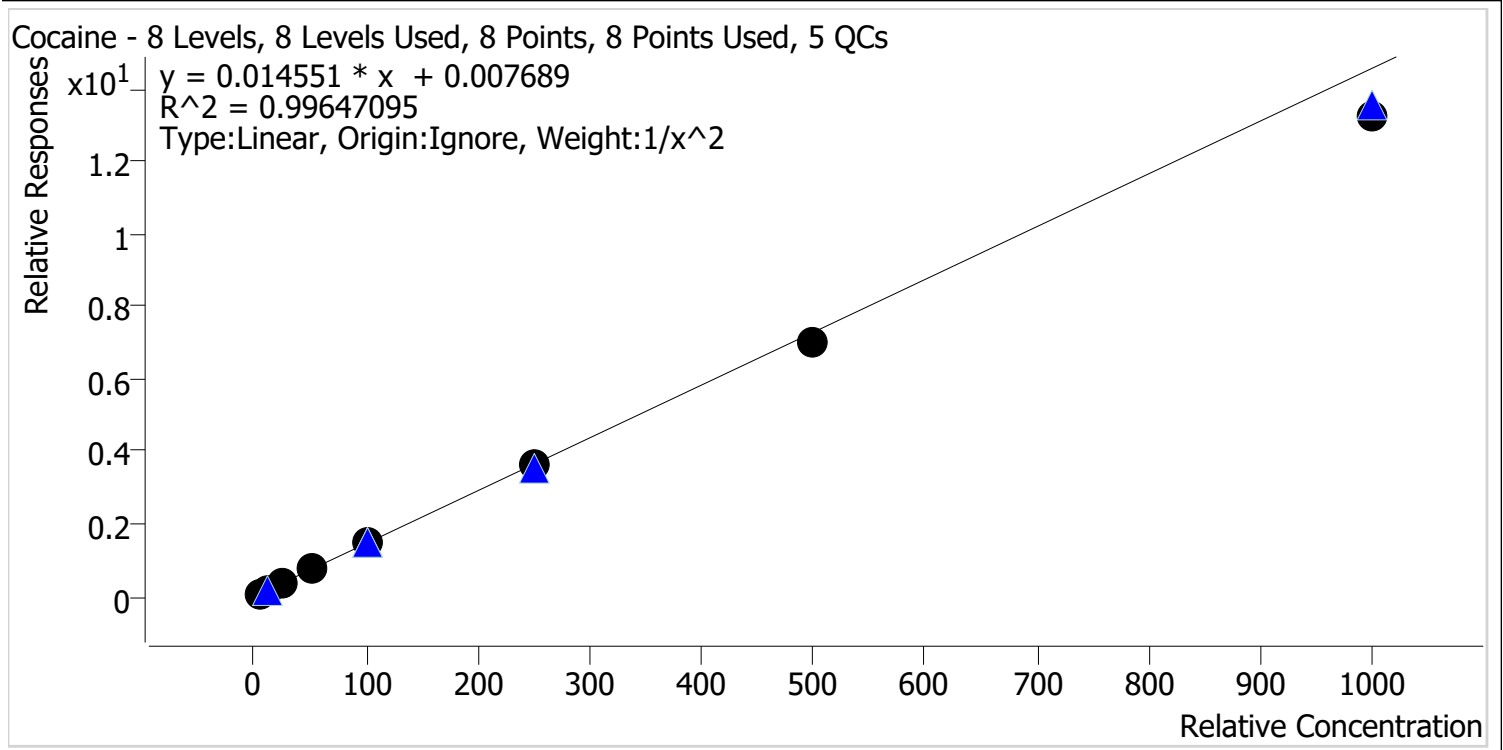
Citalopram - 8 Levels, 8 Levels Used, 8 Points, 8 Points Used, 5 QCs



Sample	Level	Enabled	Expected Concentration	Final Concentration	Accuracy
cal 1 mdq	1	✓	5.0	5.0	100.0
cal 2 mdq	2	✓	10.0	10.0	99.5
cal 3 mdq	3	✓	25.0	25.0	100.2
cal 4 mdq	4	✓	50.0	50.3	100.6
cal 5 mdq	5	✓	100.0	104.1	104.1
cal 6 mdq	6	✓	250.0	246.4	98.6
cal 7 mdq	7	✓	500.0	495.6	99.1
cal 8 mdq	8	✓	1000.0	978.6	97.9

# Compound Calibration Report

**Batch results** D:\MassHunter\Data\2024\am 27-28\020124\QuantResults\am28.batch.bin  
**Last Cal. Update** 2/7/2024 10:37 AM  
**Analyst Name** ISP\datastor  
**Analyte** Cocaine **Internal Standard** Cocaine-d3



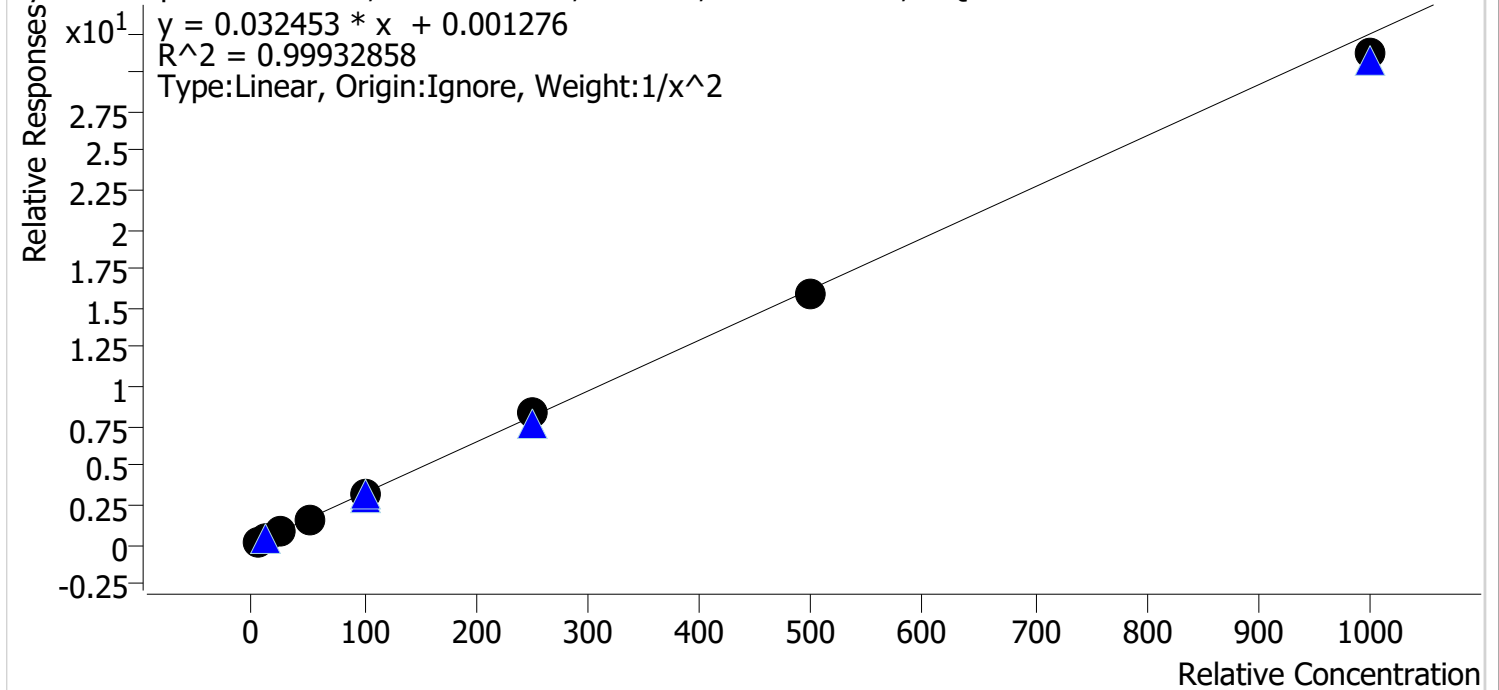
Sample	Level	Enabled	Expected Concentration	Final Concentration	Accuracy
cal 1 mdq	1	✓	5.0	4.8	96.3
cal 2 mdq	2	✓	10.0	10.5	104.5
cal 3 mdq	3	✓	25.0	26.1	104.5
cal 4 mdq	4	✓	50.0	52.8	105.7
cal 5 mdq	5	✓	100.0	102.4	102.4
cal 6 mdq	6	✓	250.0	248.8	99.5
cal 7 mdq	7	✓	500.0	480.6	96.1
cal 8 mdq	8	✓	1000.0	910.9	91.1



# Compound Calibration Report

**Batch results** D:\MassHunter\Data\2024\am 27-28\020124\QuantResults\am28.batch.bin  
**Last Cal. Update** 2/7/2024 10:37 AM  
**Analyst Name** ISP\datastor  
**Analyte** Cyclobenzaprine **Internal Standard** Cyclobenzaprine-D3

Cyclobenzaprine - 8 Levels, 8 Levels Used, 8 Points, 8 Points Used, 5 QCs



Sample	Level	Enabled	Expected Concentration	Final Concentration	Accuracy
cal 1 mdq	1	✓	5.0	4.9	98.4
cal 2 mdq	2	✓	10.0	10.2	102.2
cal 3 mdq	3	✓	25.0	25.6	102.3
cal 4 mdq	4	✓	50.0	50.5	101.0
cal 5 mdq	5	✓	100.0	99.3	99.3
cal 6 mdq	6	✓	250.0	255.1	102.0
cal 7 mdq	7	✓	500.0	493.1	98.6
cal 8 mdq	8	✓	1000.0	961.2	96.1



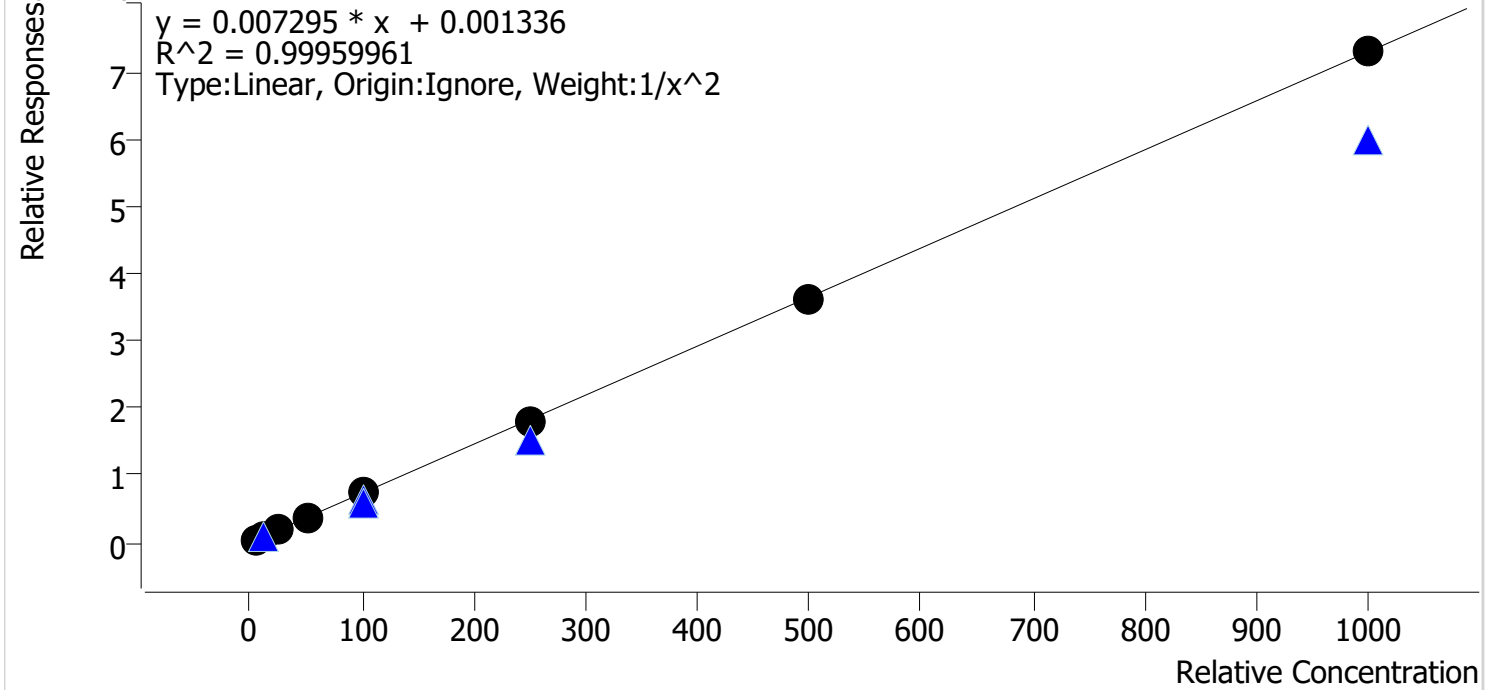




# Compound Calibration Report

**Batch results** D:\MassHunter\Data\2024\am 27-28\020124\QuantResults\am28.batch.bin  
**Last Cal. Update** 2/7/2024 10:37 AM  
**Analyst Name** ISP\datastor  
**Analyte** Diphenhydramine **Internal Standard** Diphenhydramine-D3

Diphenhydramine - 8 Levels, 8 Levels Used, 8 Points, 8 Points Used, 5 QCs

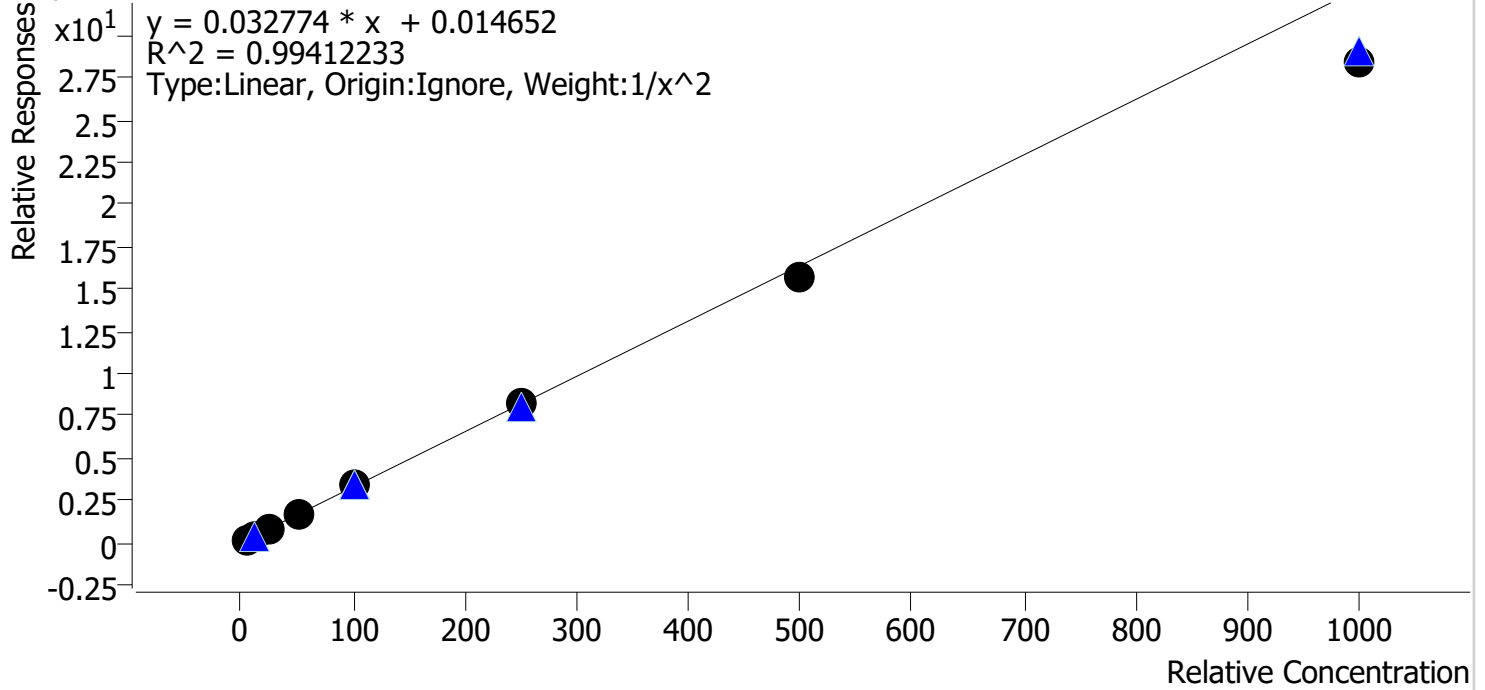


Sample	Level	Enabled	Expected Concentration	Final Concentration	Accuracy
cal 1 mdq	1	✓	5.0	5.0	100.1
cal 2 mdq	2	✓	10.0	9.9	98.7
cal 3 mdq	3	✓	25.0	25.3	101.4
cal 4 mdq	4	✓	50.0	51.6	103.3
cal 5 mdq	5	✓	100.0	99.8	99.8
cal 6 mdq	6	✓	250.0	243.7	97.5
cal 7 mdq	7	✓	500.0	495.9	99.2
cal 8 mdq	8	✓	1000.0	1000.5	100.1

# Compound Calibration Report

**Batch results** D:\MassHunter\Data\2024\am 27-28\020124\QuantResults\am28.batch.bin  
**Last Cal. Update** 2/7/2024 10:37 AM  
**Analyst Name** ISP\datastor  
**Analyte** Doxylamine **Internal Standard** Doxylamine-D5

Doxylamine - 8 Levels, 8 Levels Used, 8 Points, 8 Points Used, 5 QCs



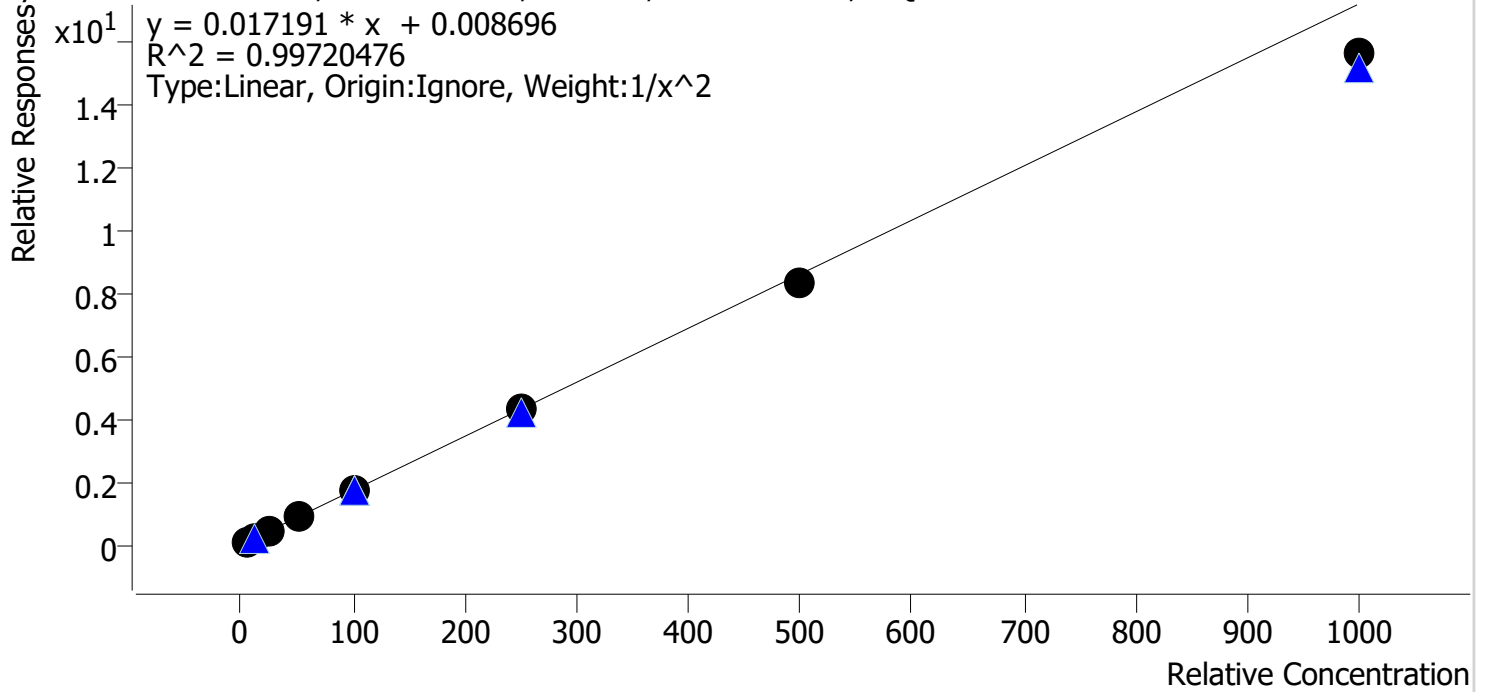
Sample	Level	Enabled	Expected Concentration	Final Concentration	Accuracy
cal 1 mdq	1	✓	5.0	4.8	96.6
cal 2 mdq	2	✓	10.0	10.3	103.3
cal 3 mdq	3	✓	25.0	26.1	104.6
cal 4 mdq	4	✓	50.0	53.6	107.2
cal 5 mdq	5	✓	100.0	104.6	104.6
cal 6 mdq	6	✓	250.0	253.0	101.2
cal 7 mdq	7	✓	500.0	479.0	95.8
cal 8 mdq	8	✓	1000.0	867.3	86.7



# Compound Calibration Report

**Batch results** D:\MassHunter\Data\2024\lam 27-28\020124\QuantResults\lam28.batch.bin  
**Last Cal. Update** 2/7/2024 10:37 AM  
**Analyst Name** ISP\datastor  
**Analyte** Hydrocodone **Internal Standard** Hydrocodone-D6

Hydrocodone - 8 Levels, 8 Levels Used, 8 Points, 8 Points Used, 5 QCs



Sample	Level	Enabled	Expected Concentration	Final Concentration	Accuracy
cal 1 mdq	1	✓	5.0	4.9	97.8
cal 2 mdq	2	✓	10.0	10.2	101.5
cal 3 mdq	3	✓	25.0	26.2	104.6
cal 4 mdq	4	✓	50.0	51.9	103.7
cal 5 mdq	5	✓	100.0	103.1	103.1
cal 6 mdq	6	✓	250.0	253.4	101.4
cal 7 mdq	7	✓	500.0	485.0	97.0
cal 8 mdq	8	✓	1000.0	907.9	90.8

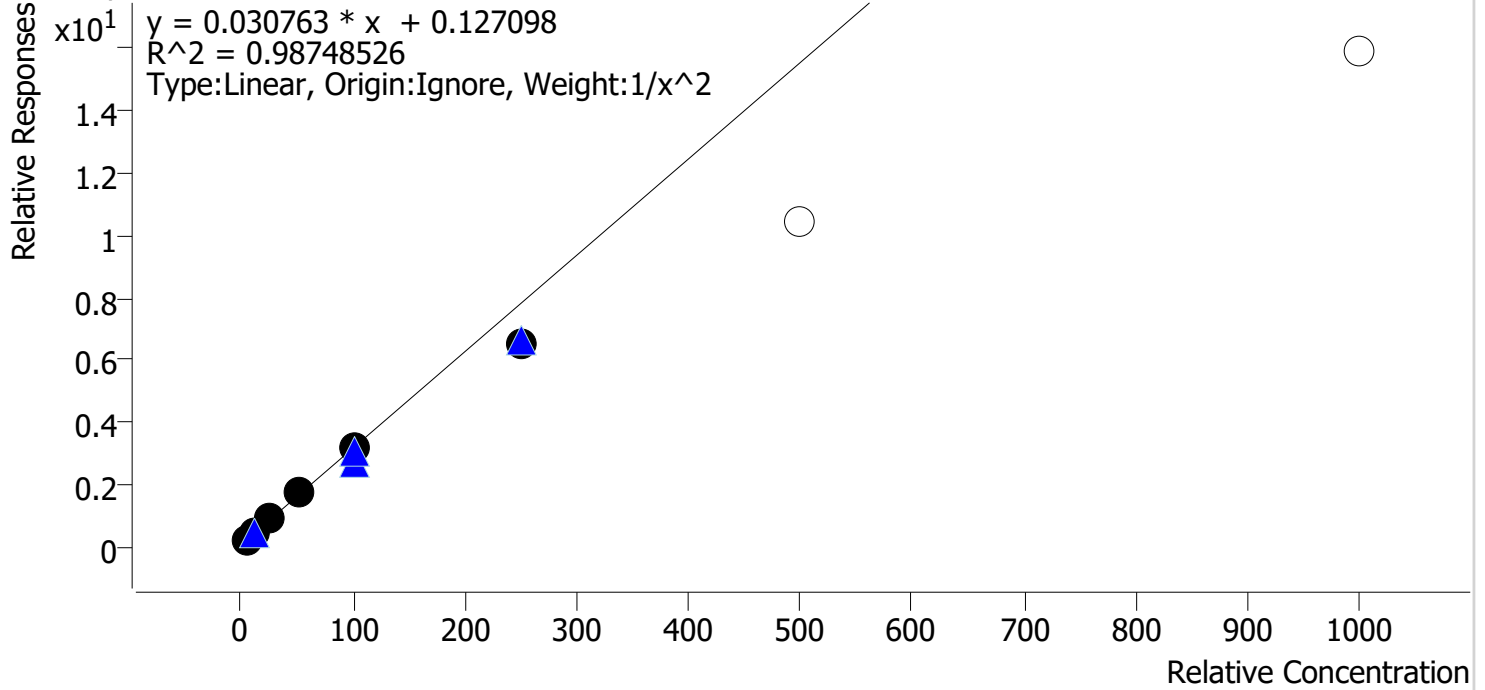




# Compound Calibration Report

**Batch results** D:\MassHunter\Data\2024\am 27-28\020124\QuantResults\am28.batch.bin  
**Last Cal. Update** 2/7/2024 10:37 AM  
**Analyst Name** ISP\datastor  
**Analyte** Methamphetamine **Internal Standard** **Methamphetamine-D11**

Methamphetamine - 8 Levels, 6 Levels Used, 8 Points, 6 Points Used, 5 QCs

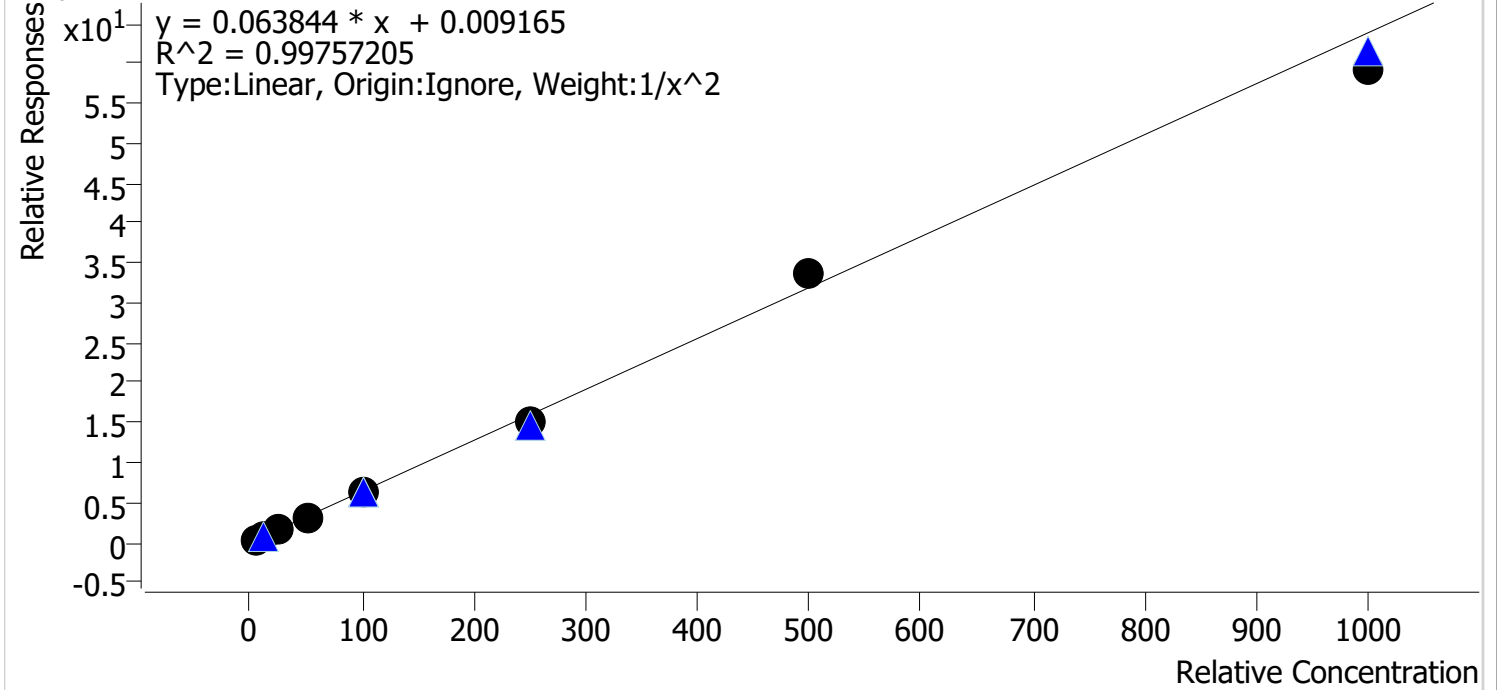


Sample	Level	Enabled	Expected Concentration	Final Concentration	Accuracy
cal 1 mdq	1	✓	5.0	4.8	95.5
cal 2 mdq	2	✓	10.0	10.6	105.5
cal 3 mdq	3	✓	25.0	26.6	106.6
cal 4 mdq	4	✓	50.0	53.5	106.9
cal 5 mdq	5	✓	100.0	102.1	102.1
cal 6 mdq	6	✓	250.0	208.6	83.5
cal 7 mdq	7	✗	500.0	333.3	66.7
cal 8 mdq	8	✗	1000.0	511.3	51.1

# Compound Calibration Report

**Batch results** D:\MassHunter\Data\2024\am 27-28\020124\QuantResults\am28.batch.bin  
**Last Cal. Update** 2/7/2024 10:37 AM  
**Analyst Name** ISP\datastor  
**Analyte** Morphine **Internal Standard** Morphine-D6

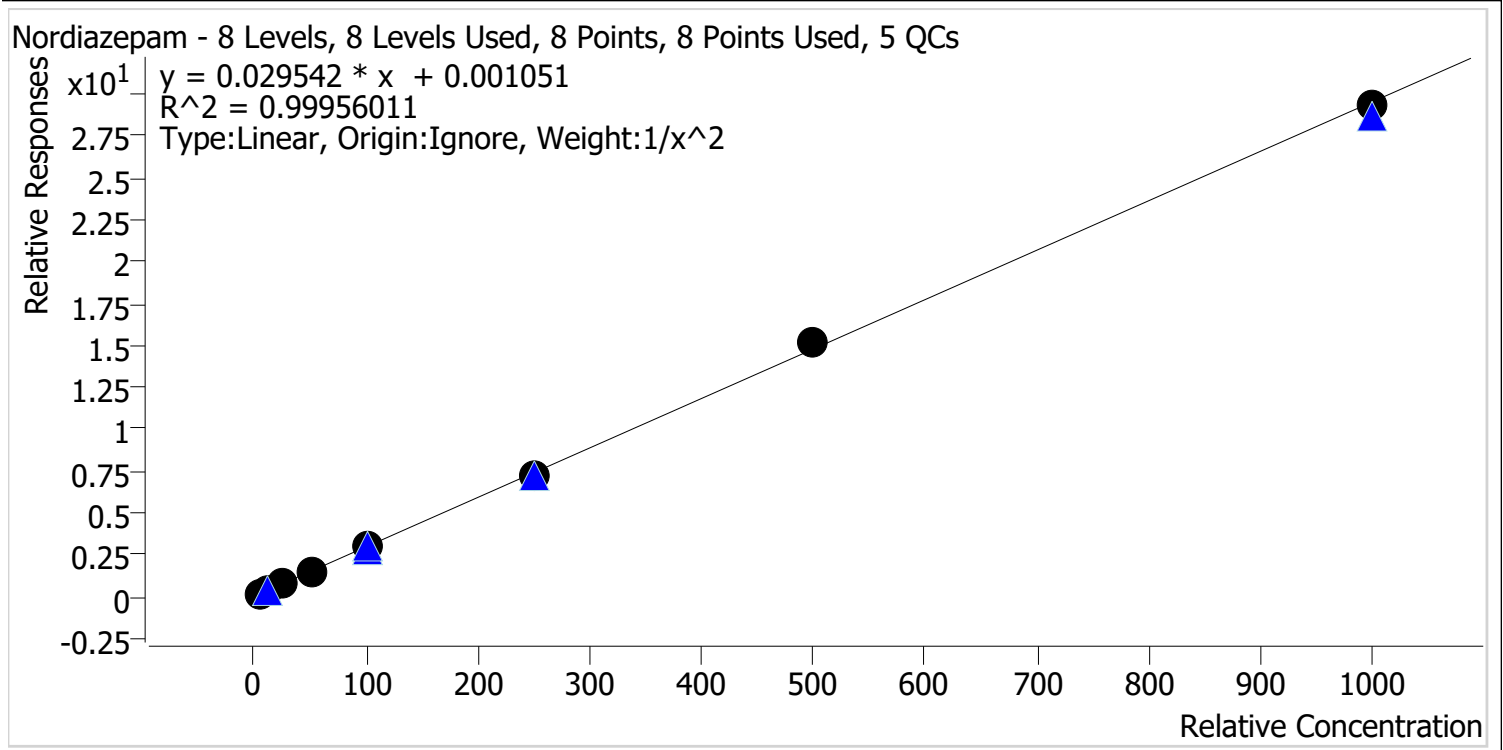
Morphine - 8 Levels, 8 Levels Used, 8 Points, 8 Points Used, 5 QCs



Sample	Level	Enabled	Expected Concentration	Final Concentration	Accuracy
cal 1 mdq	1	✓	5.0	4.9	98.5
cal 2 mdq	2	✓	10.0	10.1	100.8
cal 3 mdq	3	✓	25.0	26.2	105.0
cal 4 mdq	4	✓	50.0	51.0	102.0
cal 5 mdq	5	✓	100.0	99.3	99.3
cal 6 mdq	6	✓	250.0	239.2	95.7
cal 7 mdq	7	✓	500.0	527.7	105.5
cal 8 mdq	8	✓	1000.0	931.4	93.1

# Compound Calibration Report

**Batch results** D:\MassHunter\Data\2024\lam 27-28\020124\QuantResults\lam28.batch.bin  
**Last Cal. Update** 2/7/2024 10:37 AM  
**Analyst Name** ISP\datastor  
**Analyte** Nordiazepam **Internal Standard** Nordiazepam-D5

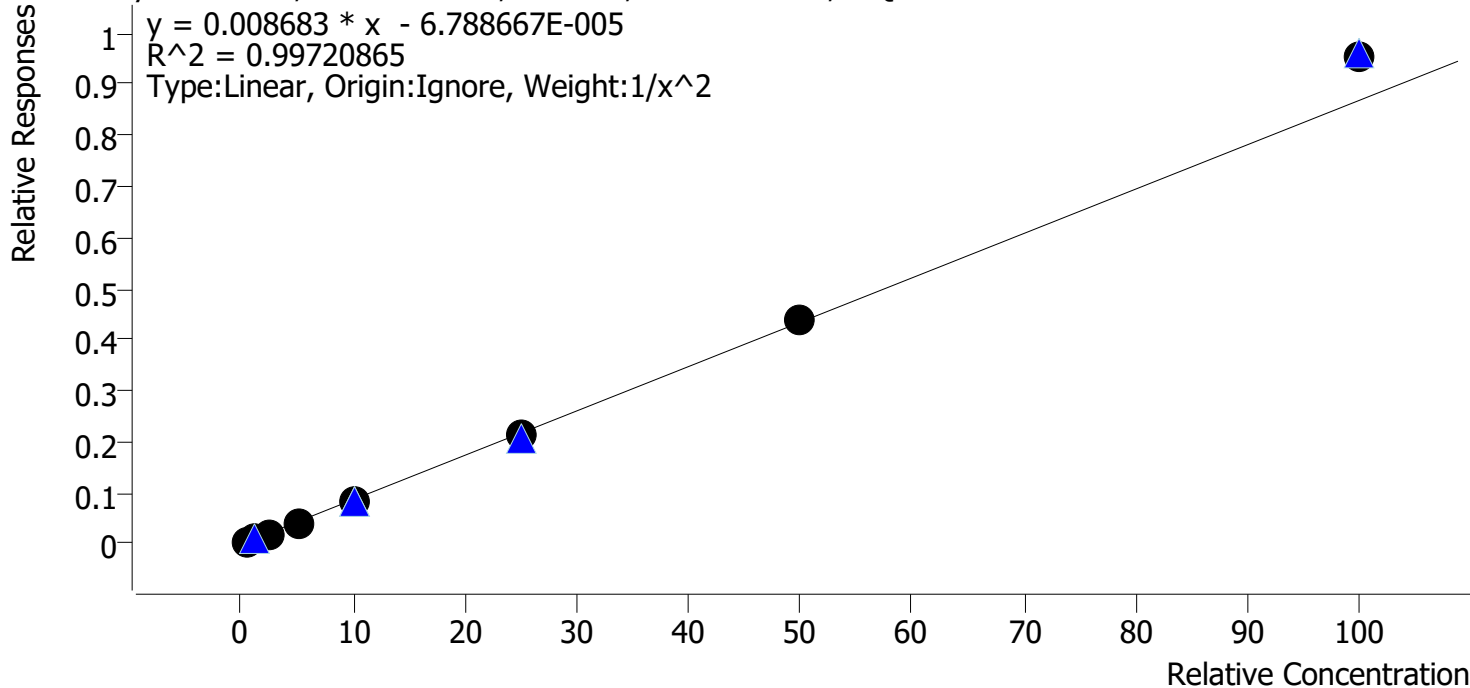


Sample	Level	Enabled	Expected Concentration	Final Concentration	Accuracy
cal 1 mdq	1	✓	5.0	5.1	101.1
cal 2 mdq	2	✓	10.0	9.8	97.5
cal 3 mdq	3	✓	25.0	25.2	100.9
cal 4 mdq	4	✓	50.0	49.1	98.3
cal 5 mdq	5	✓	100.0	101.8	101.8
cal 6 mdq	6	✓	250.0	246.5	98.6
cal 7 mdq	7	✓	500.0	512.5	102.5
cal 8 mdq	8	✓	1000.0	992.5	99.3

# Compound Calibration Report

**Batch results** D:\MassHunter\Data\2024\am 27-28\020124\QuantResults\am28.batch.bin  
**Last Cal. Update** 2/7/2024 10:37 AM  
**Analyst Name** ISP\datastor  
**Analyte** Norfentanyl **Internal Standard** Norfentanyl-D5

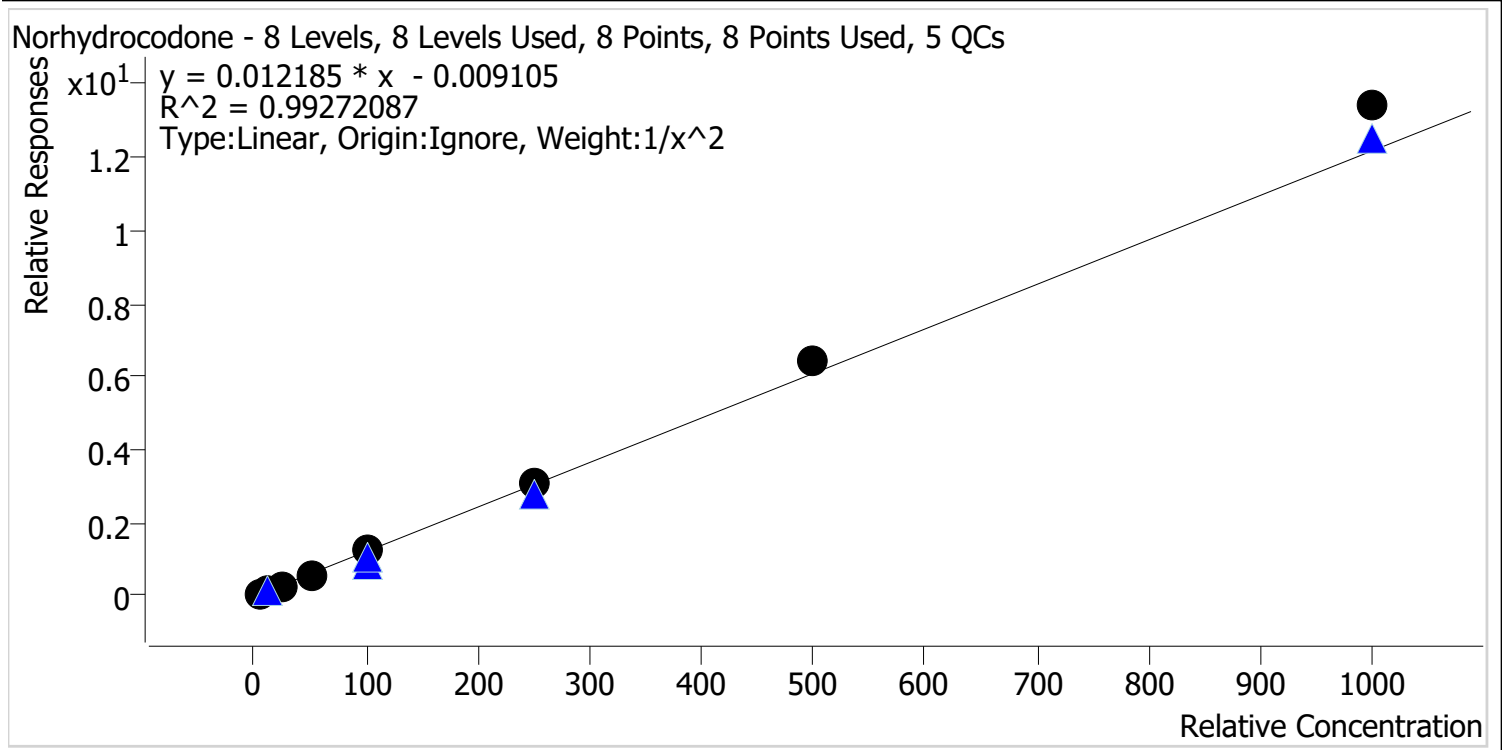
Norfentanyl - 8 Levels, 8 Levels Used, 8 Points, 8 Points Used, 5 QCs



Sample	Level	Enabled	Expected Concentration	Final Concentration	Accuracy
cal 1 mdq	1	✓	0.5	0.5	102.9
cal 2 mdq	2	✓	1.0	1.0	96.7
cal 3 mdq	3	✓	2.5	2.4	95.2
cal 4 mdq	4	✓	5.0	4.9	98.0
cal 5 mdq	5	✓	10.0	9.7	97.5
cal 6 mdq	6	✓	25.0	24.6	98.5
cal 7 mdq	7	✓	50.0	50.9	101.7
cal 8 mdq	8	✓	100.0	109.5	109.5

# Compound Calibration Report

**Batch results** D:\MassHunter\Data\2024\am 27-28\020124\QuantResults\am28.batch.bin  
**Last Cal. Update** 2/7/2024 10:37 AM  
**Analyst Name** ISP\datastor  
**Analyte** Norhydrocodone **Internal Standard** Norhydrocodone-D3



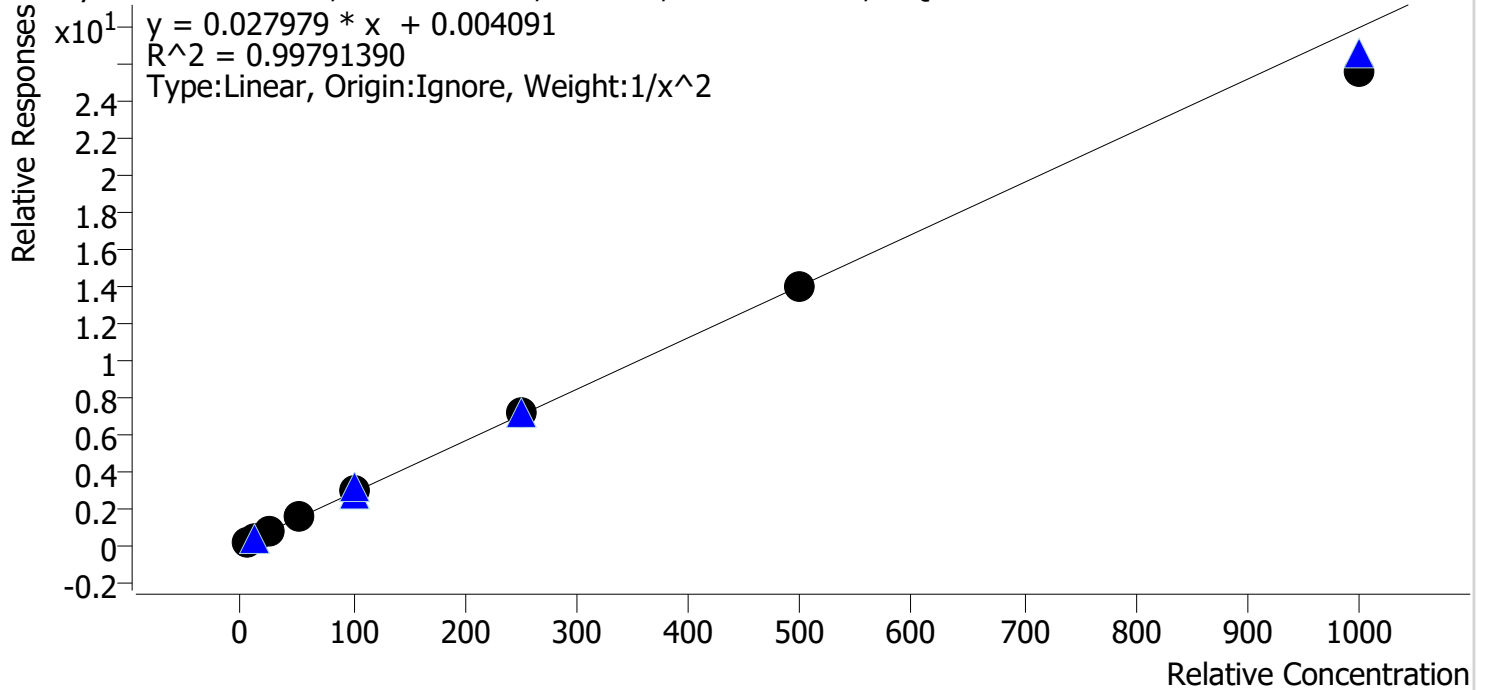
Sample	Level	Enabled	Expected Concentration	Final Concentration	Accuracy
cal 1 mdq	1	✓	5.0	5.3	106.0
cal 2 mdq	2	✓	10.0	9.3	92.8
cal 3 mdq	3	✓	25.0	22.9	91.5
cal 4 mdq	4	✓	50.0	45.4	90.8
cal 5 mdq	5	✓	100.0	100.4	100.4
cal 6 mdq	6	✓	250.0	256.1	102.4
cal 7 mdq	7	✓	500.0	528.8	105.8
cal 8 mdq	8	✓	1000.0	1101.7	110.2

# Compound Calibration Report

**Batch results** D:\MassHunter\Data\2024\am 27-28\020124\QuantResults\am28.batch.bin  
**Last Cal. Update** 2/7/2024 10:37 AM  
**Analyst Name** ISP\datastor  
**Analyte** Noroxycodone

**Internal Standard** Noroxycodone-D3

Noroxycodone - 8 Levels, 8 Levels Used, 8 Points, 8 Points Used, 5 QCs

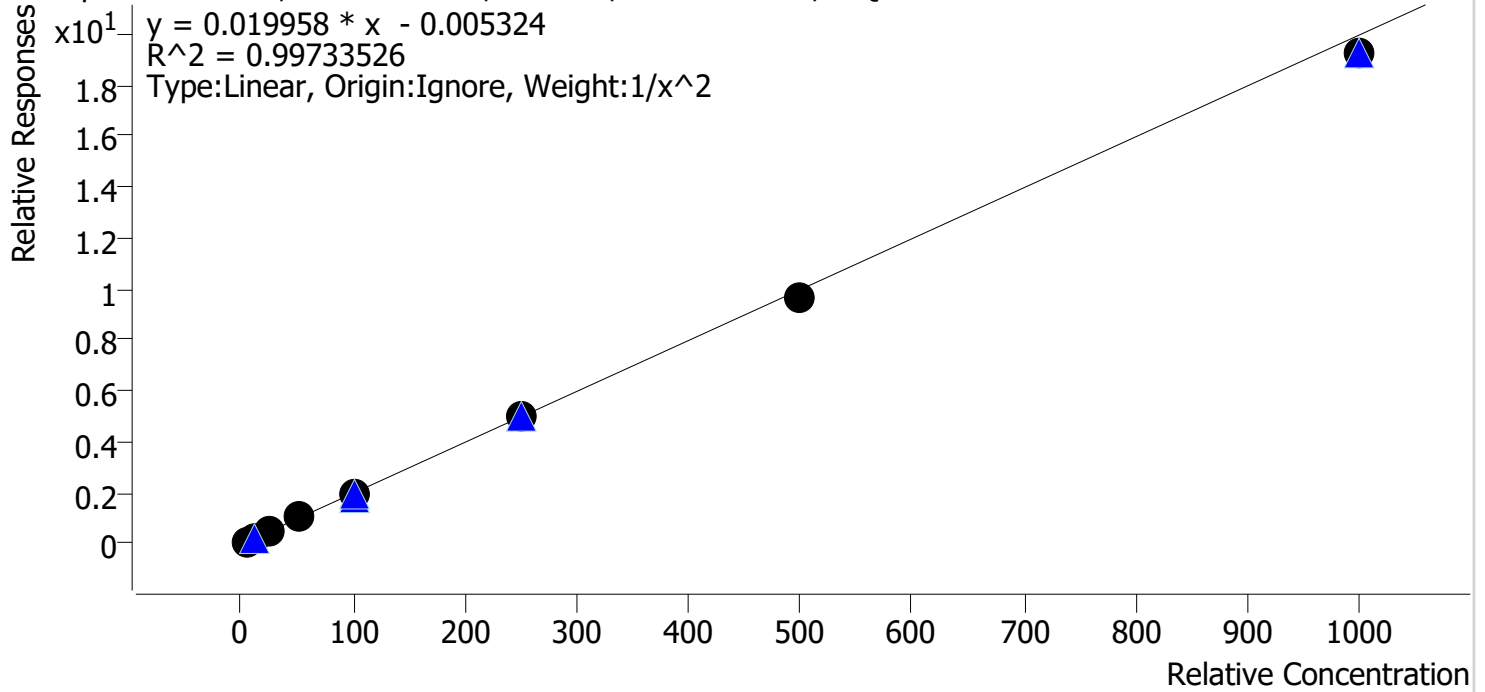


Sample	Level	Enabled	Expected Concentration	Final Concentration	Accuracy
cal 1 mdq	1	✓	5.0	5.0	100.1
cal 2 mdq	2	✓	10.0	9.8	98.0
cal 3 mdq	3	✓	25.0	25.5	101.9
cal 4 mdq	4	✓	50.0	51.5	103.0
cal 5 mdq	5	✓	100.0	103.3	103.3
cal 6 mdq	6	✓	250.0	255.9	102.3
cal 7 mdq	7	✓	500.0	500.2	100.0
cal 8 mdq	8	✓	1000.0	912.2	91.2

# Compound Calibration Report

**Batch results** D:\MassHunter\Data\2024\am 27-28\020124\QuantResults\am28.batch.bin  
**Last Cal. Update** 2/7/2024 10:37 AM  
**Analyst Name** ISP\datastor  
**Analyte** Oxazepam **Internal Standard** Oxazepam-D5

Oxazepam - 8 Levels, 8 Levels Used, 8 Points, 8 Points Used, 5 QCs



Sample	Level	Enabled	Expected Concentration	Final Concentration	Accuracy
cal 1 mdq	1	✓	5.0	4.8	95.9
cal 2 mdq	2	✓	10.0	10.9	108.9
cal 3 mdq	3	✓	25.0	24.1	96.5
cal 4 mdq	4	✓	50.0	51.6	103.3
cal 5 mdq	5	✓	100.0	100.9	100.9
cal 6 mdq	6	✓	250.0	252.1	100.9
cal 7 mdq	7	✓	500.0	486.6	97.3
cal 8 mdq	8	✓	1000.0	963.6	96.4

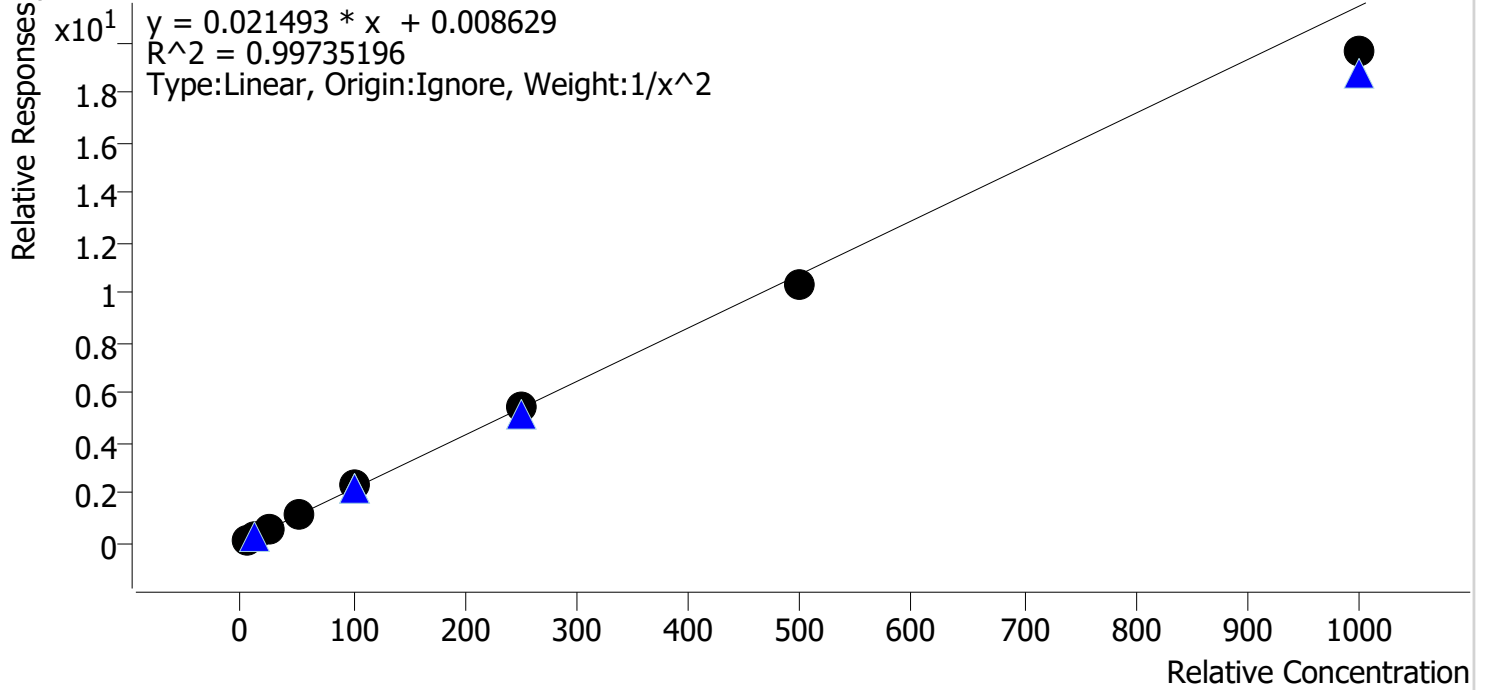


# Compound Calibration Report

**Batch results** D:\MassHunter\Data\2024\am 27-28\020124\QuantResults\am28.batch.bin  
**Last Cal. Update** 2/7/2024 10:37 AM  
**Analyst Name** ISP\datastor  
**Analyte** Oxycodone

**Internal Standard** Oxycodone-D6

Oxycodone - 8 Levels, 8 Levels Used, 8 Points, 8 Points Used, 5 QCs

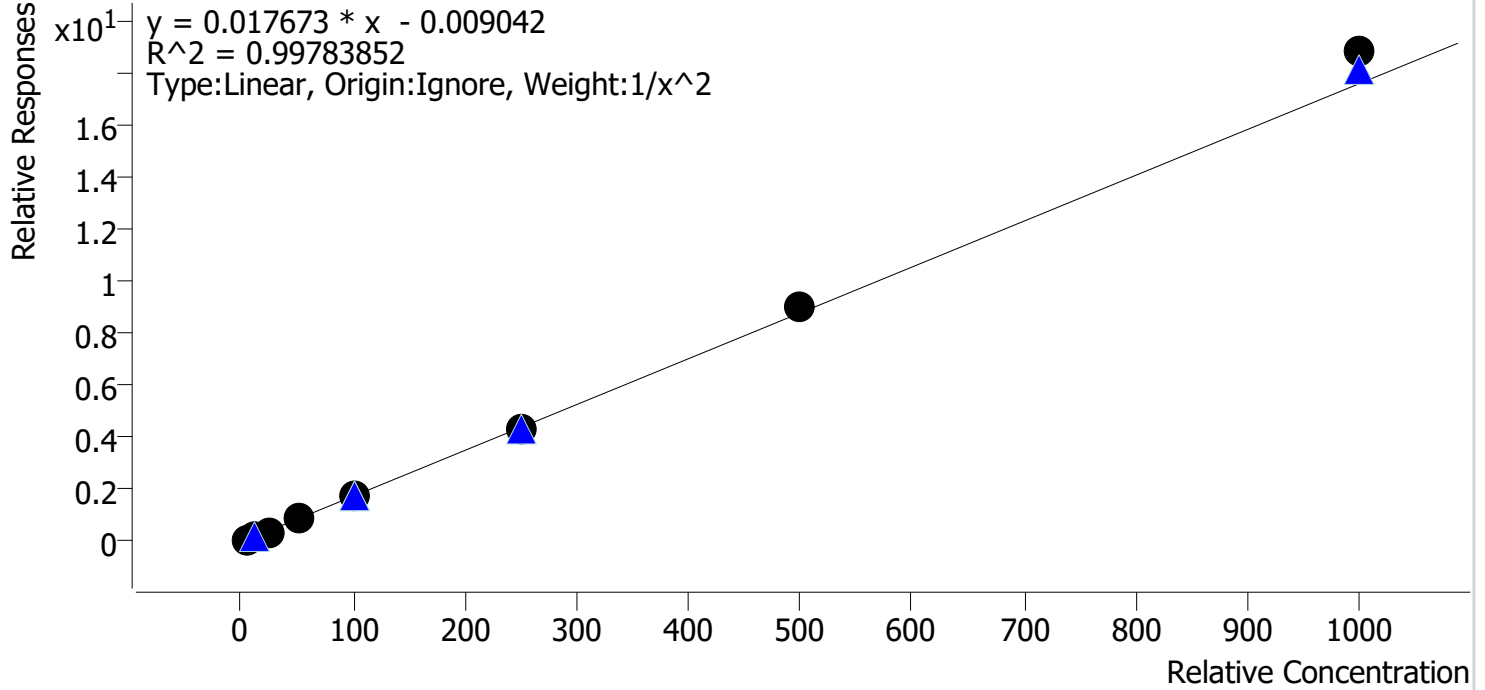


Sample	Level	Enabled	Expected Concentration	Final Concentration	Accuracy
cal 1 mdq	1	✓	5.0	4.9	97.5
cal 2 mdq	2	✓	10.0	10.2	102.4
cal 3 mdq	3	✓	25.0	26.0	104.2
cal 4 mdq	4	✓	50.0	51.7	103.4
cal 5 mdq	5	✓	100.0	104.0	104.0
cal 6 mdq	6	✓	250.0	250.5	100.2
cal 7 mdq	7	✓	500.0	483.9	96.8
cal 8 mdq	8	✓	1000.0	915.1	91.5

# Compound Calibration Report

**Batch results** D:\MassHunter\Data\2024\am 27-28\020124\QuantResults\am28.batch.bin  
**Last Cal. Update** 2/7/2024 10:37 AM  
**Analyst Name** ISP\datastor  
**Analyte** Promethazine **Internal Standard** Promethazine-D3

Promethazine - 8 Levels, 8 Levels Used, 8 Points, 8 Points Used, 5 QCs

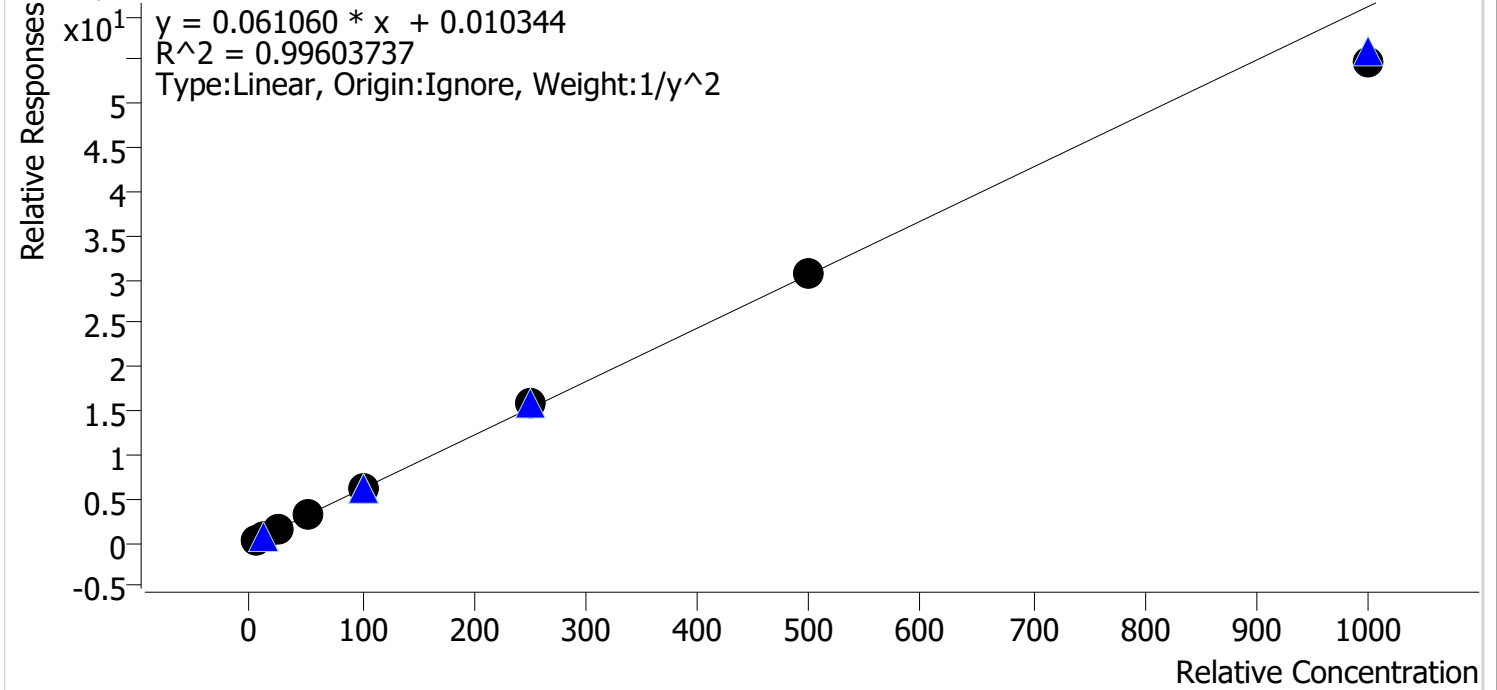


Sample	Level	Enabled	Expected Concentration	Final Concentration	Accuracy
cal 1 mdq	1	✓	5.0	5.1	102.0
cal 2 mdq	2	✓	10.0	9.9	99.1
cal 3 mdq	3	✓	25.0	23.6	94.3
cal 4 mdq	4	✓	50.0	48.2	96.5
cal 5 mdq	5	✓	100.0	97.9	97.9
cal 6 mdq	6	✓	250.0	249.8	99.9
cal 7 mdq	7	✓	500.0	516.6	103.3
cal 8 mdq	8	✓	1000.0	1070.0	107.0

# Compound Calibration Report

**Batch results** D:\MassHunter\Data\2024\am 27-28\020124\QuantResults\am28.batch.bin  
**Last Cal. Update** 2/7/2024 10:37 AM  
**Analyst Name** ISP\datastor  
**Analyte** Quetiapine **Internal Standard** Quetiapine-D8

Quetiapine - 8 Levels, 8 Levels Used, 8 Points, 8 Points Used, 5 QCs

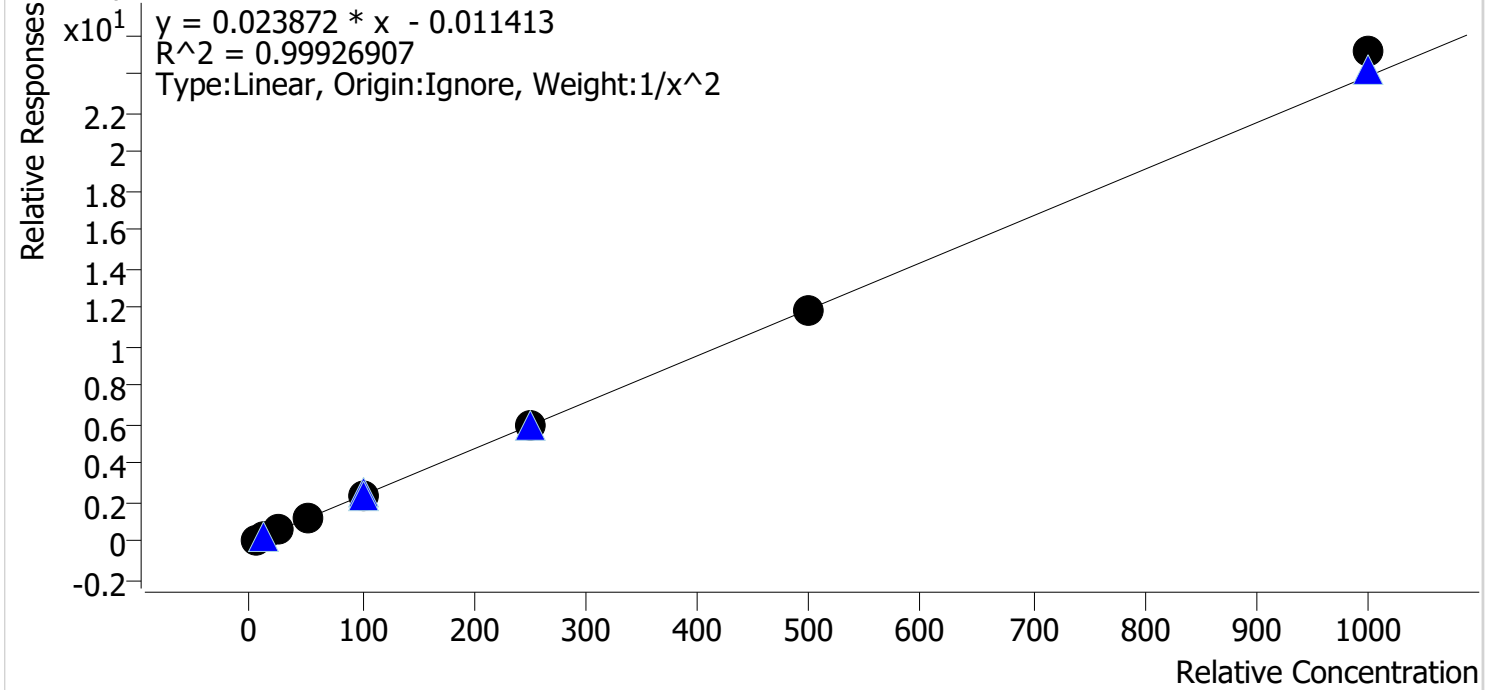


Sample	Level	Enabled	Expected Concentration	Final Concentration	Accuracy
cal 1 mdq	1	✓	5.0	4.9	98.1
cal 2 mdq	2	✓	10.0	10.1	101.2
cal 3 mdq	3	✓	25.0	25.8	103.0
cal 4 mdq	4	✓	50.0	53.4	106.8
cal 5 mdq	5	✓	100.0	102.4	102.4
cal 6 mdq	6	✓	250.0	257.7	103.1
cal 7 mdq	7	✓	500.0	500.4	100.1
cal 8 mdq	8	✓	1000.0	893.6	89.4

# Compound Calibration Report

**Batch results** D:\MassHunter\Data\2024\am 27-28\020124\QuantResults\am28.batch.bin  
**Last Cal. Update** 2/7/2024 10:37 AM  
**Analyst Name** ISP\datastor  
**Analyte** Temazepam **Internal Standard** Temazepam-D5

Temazepam - 8 Levels, 8 Levels Used, 8 Points, 8 Points Used, 5 QCs



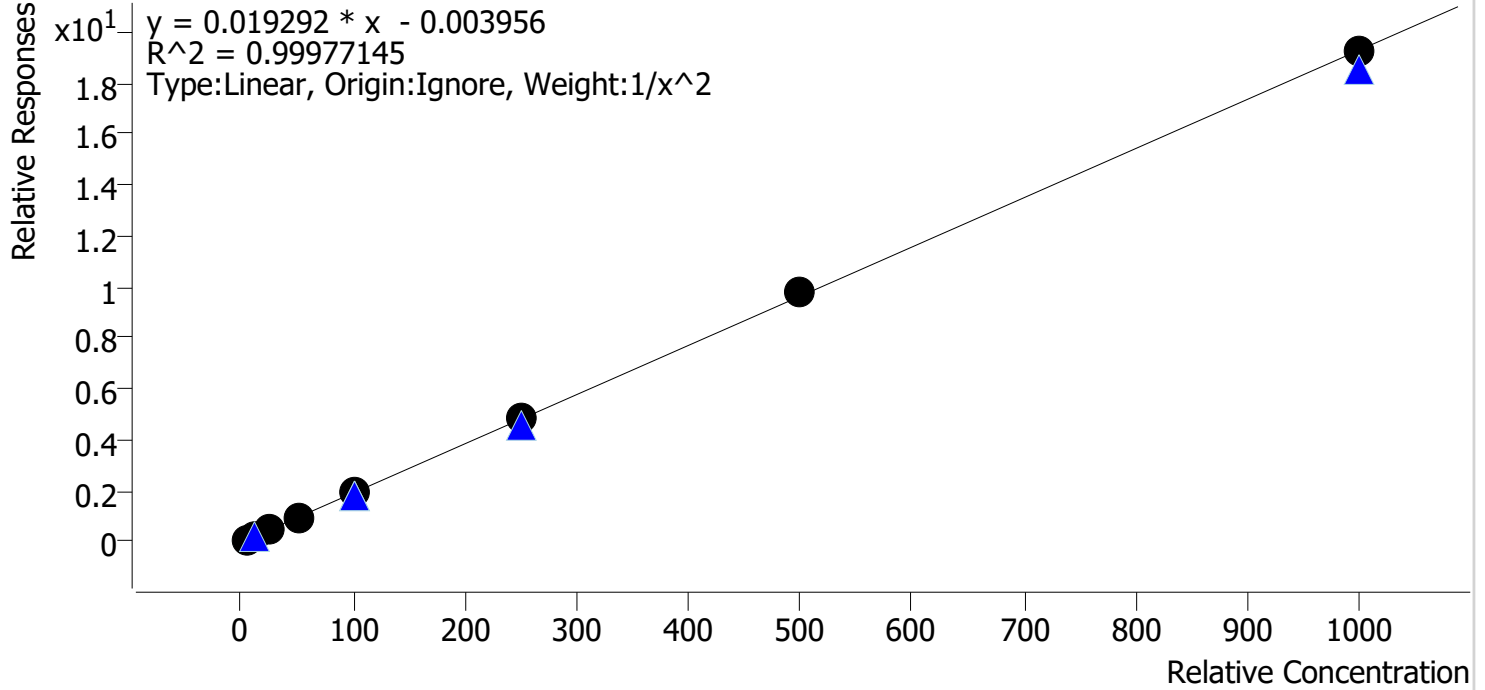
Sample	Level	Enabled	Expected Concentration	Final Concentration	Accuracy
cal 1 mdq	1	✓	5.0	5.1	101.2
cal 2 mdq	2	✓	10.0	9.8	98.5
cal 3 mdq	3	✓	25.0	24.8	99.1
cal 4 mdq	4	✓	50.0	49.2	98.5
cal 5 mdq	5	✓	100.0	98.2	98.2
cal 6 mdq	6	✓	250.0	248.3	99.3
cal 7 mdq	7	✓	500.0	500.0	100.0
cal 8 mdq	8	✓	1000.0	1052.9	105.3

# Compound Calibration Report

**Batch results** D:\MassHunter\Data\2024\am 27-28\020124\QuantResults\am28.batch.bin  
**Last Cal. Update** 2/7/2024 10:37 AM  
**Analyst Name** ISP\datastor  
**Analyte** Trazodone

**Internal Standard** Trazodone-D6

Trazodone - 8 Levels, 8 Levels Used, 8 Points, 8 Points Used, 5 QCs

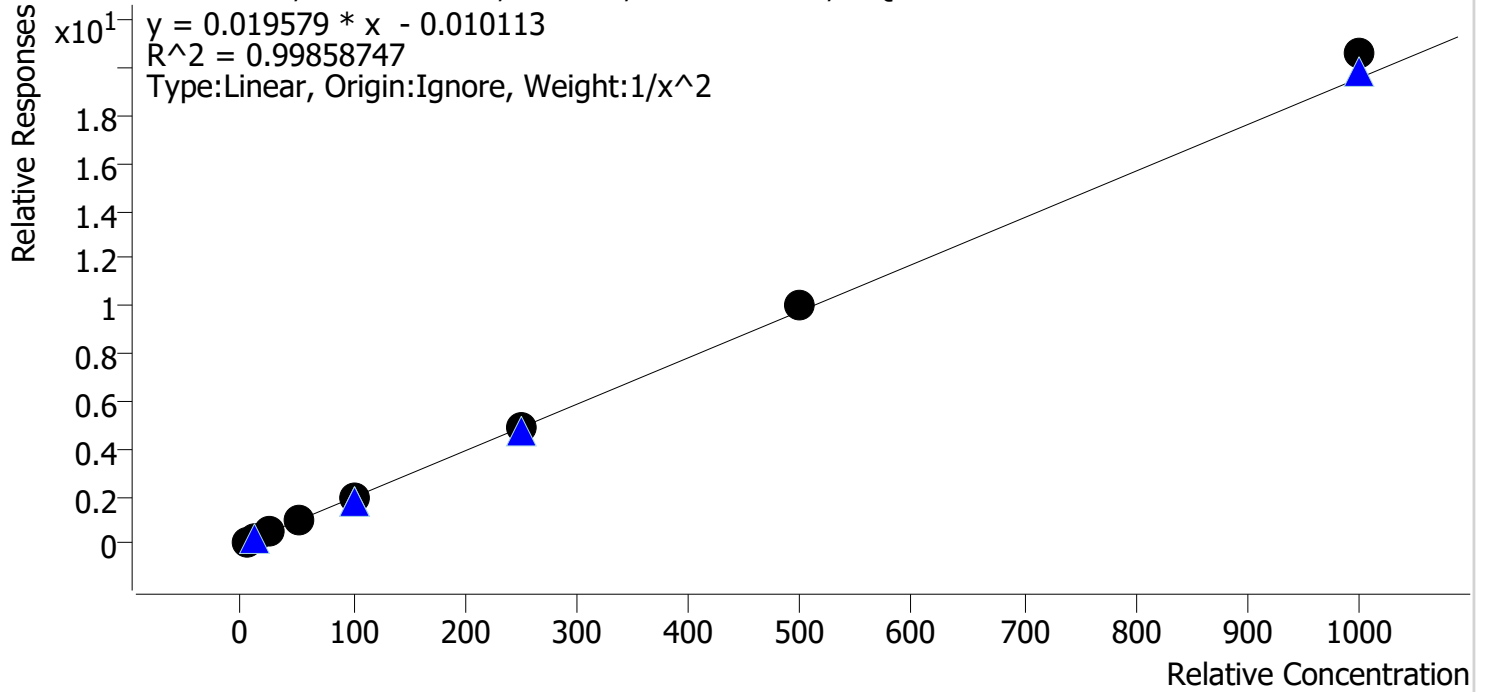


Sample	Level	Enabled	Expected Concentration	Final Concentration	Accuracy
cal 1 mdq	1	✓	5.0	5.0	100.9
cal 2 mdq	2	✓	10.0	9.9	98.9
cal 3 mdq	3	✓	25.0	24.5	97.9
cal 4 mdq	4	✓	50.0	50.8	101.6
cal 5 mdq	5	✓	100.0	99.0	99.0
cal 6 mdq	6	✓	250.0	252.5	101.0
cal 7 mdq	7	✓	500.0	505.4	101.1
cal 8 mdq	8	✓	1000.0	997.1	99.7

# Compound Calibration Report

**Batch results** D:\MassHunter\Data\2024\am 27-28\020124\QuantResults\am28.batch.bin  
**Last Cal. Update** 2/7/2024 10:37 AM  
**Analyst Name** ISP\datastor  
**Analyte** Venlafaxine **Internal Standard** Venlafaxine-D6

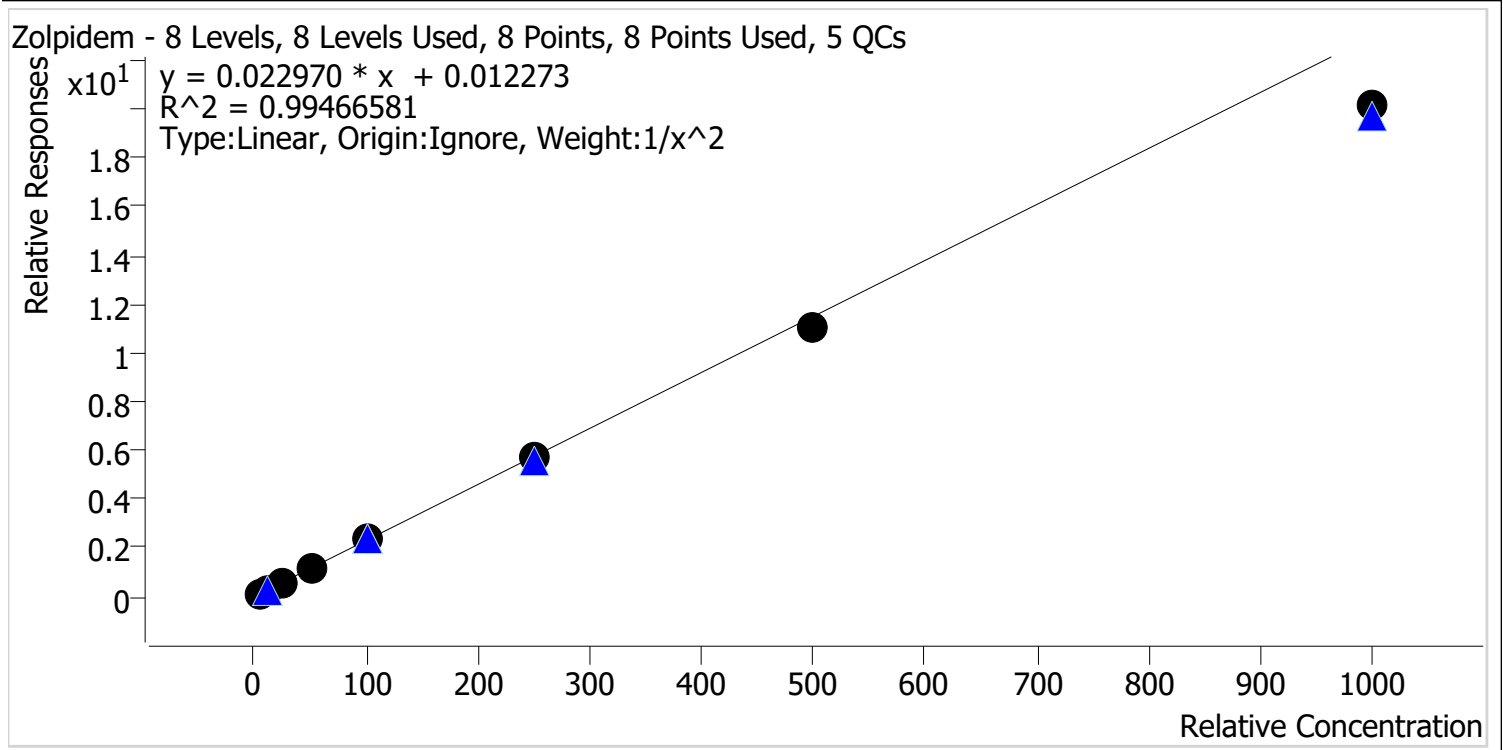
Venlafaxine - 8 Levels, 8 Levels Used, 8 Points, 8 Points Used, 5 QCs



Sample	Level	Enabled	Expected Concentration	Final Concentration	Accuracy
cal 1 mdq	1	✓	5.0	5.1	102.3
cal 2 mdq	2	✓	10.0	9.8	97.7
cal 3 mdq	3	✓	25.0	23.9	95.6
cal 4 mdq	4	✓	50.0	48.8	97.6
cal 5 mdq	5	✓	100.0	98.3	98.3
cal 6 mdq	6	✓	250.0	250.6	100.2
cal 7 mdq	7	✓	500.0	514.9	103.0
cal 8 mdq	8	✓	1000.0	1052.5	105.3

# Compound Calibration Report

**Batch results** D:\MassHunter\Data\2024\am 27-28\020124\QuantResults\am28.batch.bin  
**Last Cal. Update** 2/7/2024 10:37 AM  
**Analyst Name** ISP\datastor  
**Analyte** Zolpidem **Internal Standard** Zolpidem-D6

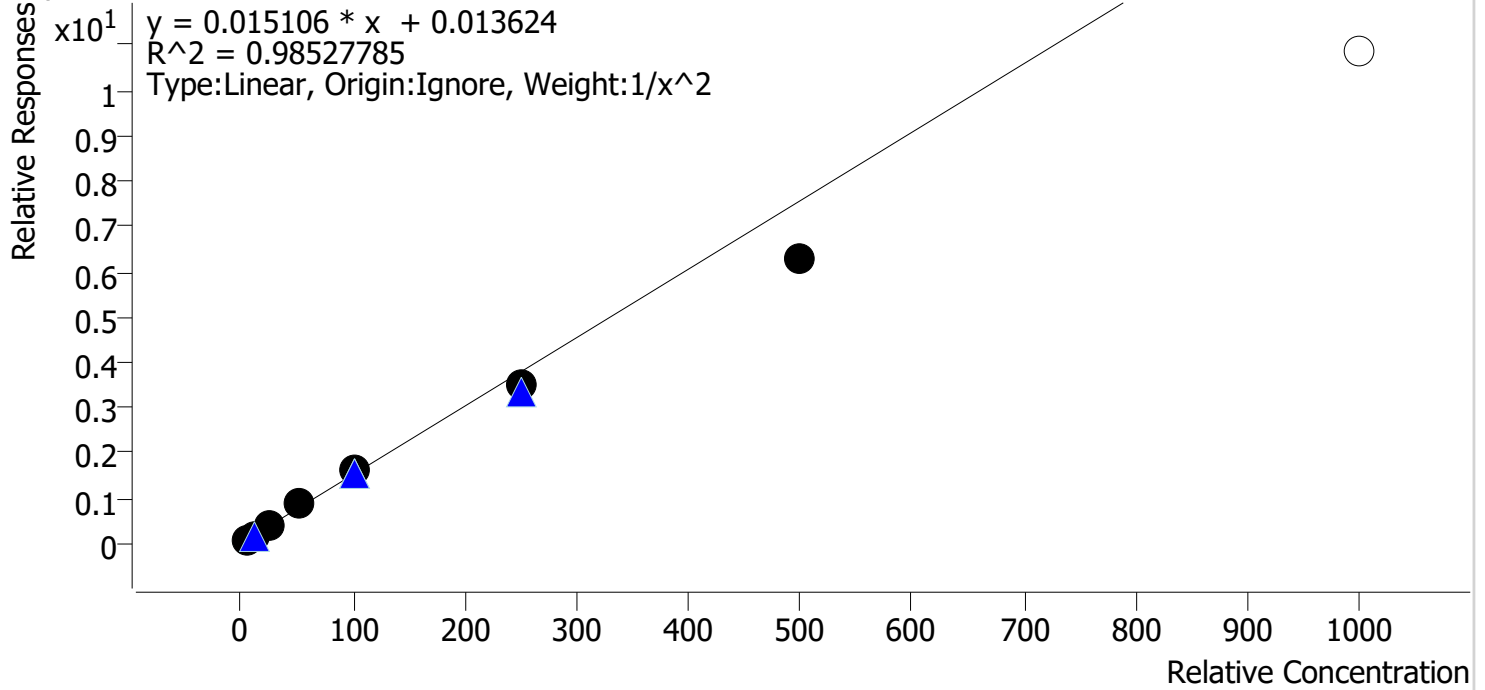


Sample	Level	Enabled	Expected Concentration	Final Concentration	Accuracy
cal 1 mdq	1	✓	5.0	4.9	97.4
cal 2 mdq	2	✓	10.0	10.1	101.3
cal 3 mdq	3	✓	25.0	26.4	105.8
cal 4 mdq	4	✓	50.0	53.3	106.7
cal 5 mdq	5	✓	100.0	105.5	105.5
cal 6 mdq	6	✓	250.0	248.3	99.3
cal 7 mdq	7	✓	500.0	482.0	96.4
cal 8 mdq	8	✓	1000.0	876.5	87.6

# Compound Calibration Report

<b>Batch results</b>	D:\MassHunter\Data\2024\am 27-28\020124\QuantResults\am28.batch.bin		
<b>Last Cal. Update</b>	2/7/2024 10:37 AM		
<b>Analyst Name</b>	ISP\datastor		
<b>Analyte</b>	Dihydrocodeine	<b>Internal Standard</b>	Dihydrocodeine-D6

Dihydrocodeine - 8 Levels, 7 Levels Used, 8 Points, 7 Points Used, 5 QCs



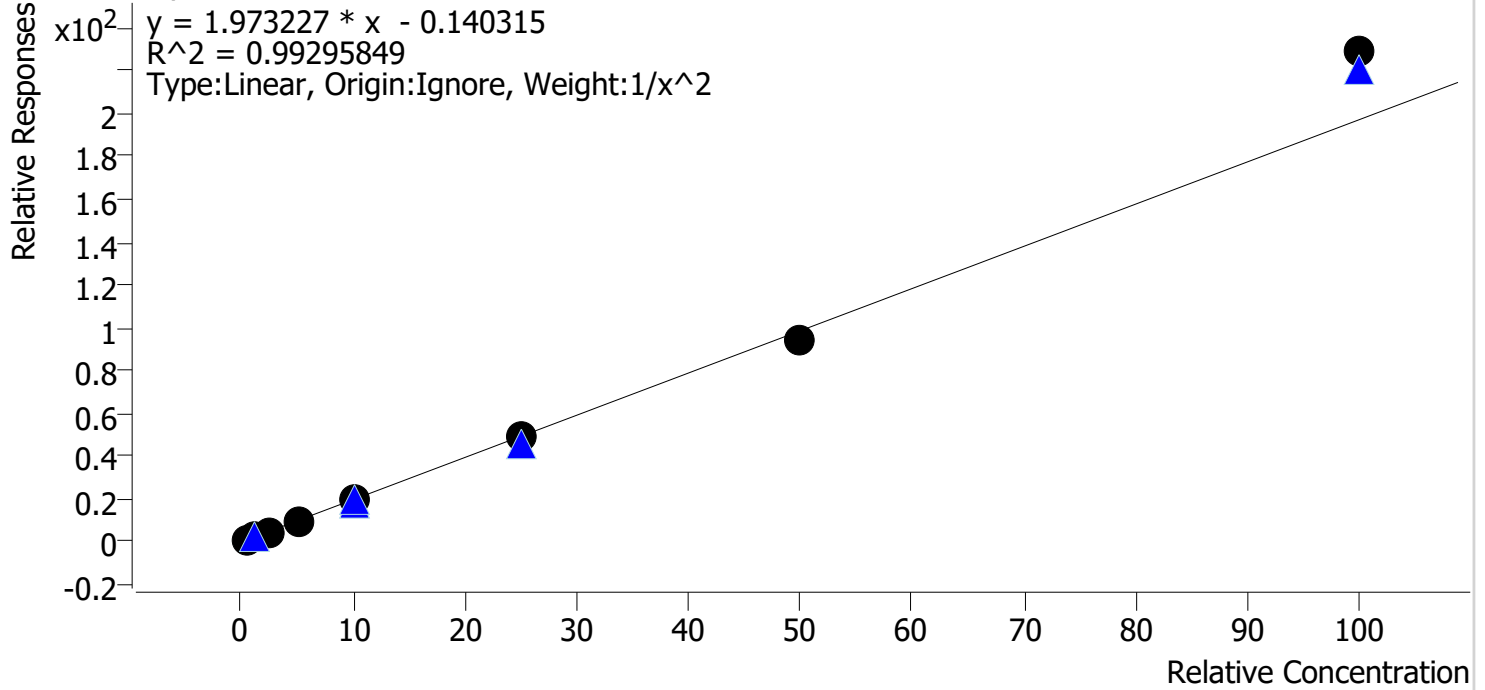
Sample	Level	Enabled	Expected Concentration	Final Concentration	Accuracy
cal 1 mdq	1	✓	5.0	4.7	94.8
cal 2 mdq	2	✓	10.0	10.4	104.4
cal 3 mdq	3	✓	25.0	27.5	109.9
cal 4 mdq	4	✓	50.0	55.6	111.3
cal 5 mdq	5	✓	100.0	104.6	104.6
cal 6 mdq	6	✓	250.0	229.0	91.6
cal 7 mdq	7	✓	500.0	417.0	83.4
cal 8 mdq	8	✗	1000.0	717.7	71.8



# Compound Calibration Report

**Batch results** D:\MassHunter\Data\2024\am 27-28\020124\QuantResults\am28.batch.bin  
**Last Cal. Update** 2/7/2024 10:37 AM  
**Analyst Name** ISP\datastor  
**Analyte** Fluorofentanyl **Internal Standard** Fluorofentanyl-D5

Fluorofentanyl - 8 Levels, 8 Levels Used, 8 Points, 8 Points Used, 5 QCs



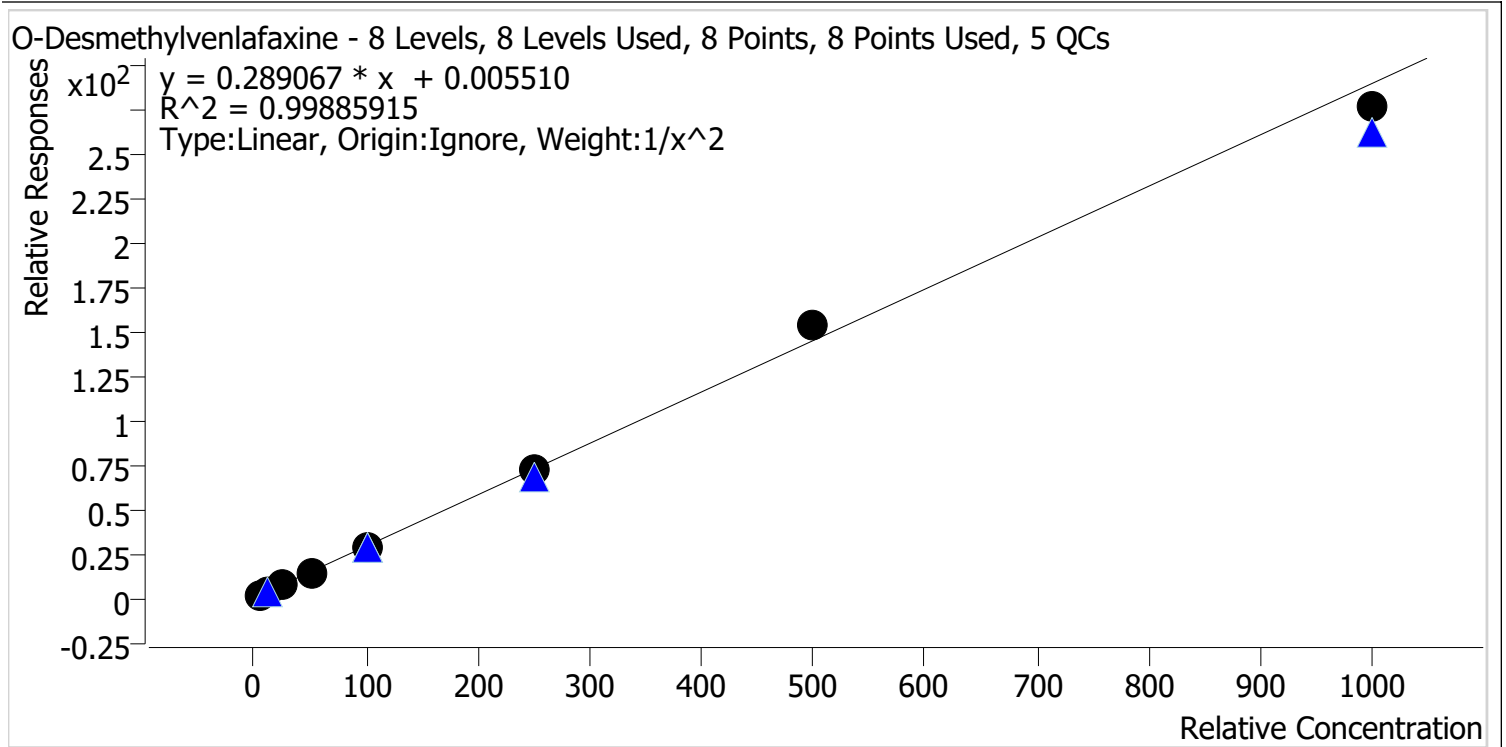
Sample	Level	Enabled	Expected Concentration	Final Concentration	Accuracy
cal 1 mdq	1	✓	0.5	0.5	101.7
cal 2 mdq	2	✓	1.0	1.0	99.8
cal 3 mdq	3	✓	2.5	2.4	96.5
cal 4 mdq	4	✓	5.0	4.6	91.4
cal 5 mdq	5	✓	10.0	9.7	96.8
cal 6 mdq	6	✓	25.0	25.3	101.2
cal 7 mdq	7	✓	50.0	48.2	96.4
cal 8 mdq	8	✓	100.0	116.1	116.1

# Compound Calibration Report

**Batch results** D:\MassHunter\Data\2024\am 27-28\020124\QuantResults\am28.batch.bin  
**Last Cal. Update** 2/7/2024 10:37 AM  
**Analyst Name** ISP\datastor  
**Analyte** O-Desmethylvenlafaxine

**Internal Standard**

O-Desmethylvenlafaxine-d6



Sample	Level	Enabled	Expected Concentration	Final Concentration	Accuracy
cal 1 mdq	1	✓	5.0	5.0	100.1
cal 2 mdq	2	✓	10.0	10.0	100.4
cal 3 mdq	3	✓	25.0	24.7	98.7
cal 4 mdq	4	✓	50.0	50.0	99.9
cal 5 mdq	5	✓	100.0	98.8	98.8
cal 6 mdq	6	✓	250.0	251.9	100.8
cal 7 mdq	7	✓	500.0	529.7	105.9
cal 8 mdq	8	✓	1000.0	954.3	95.4

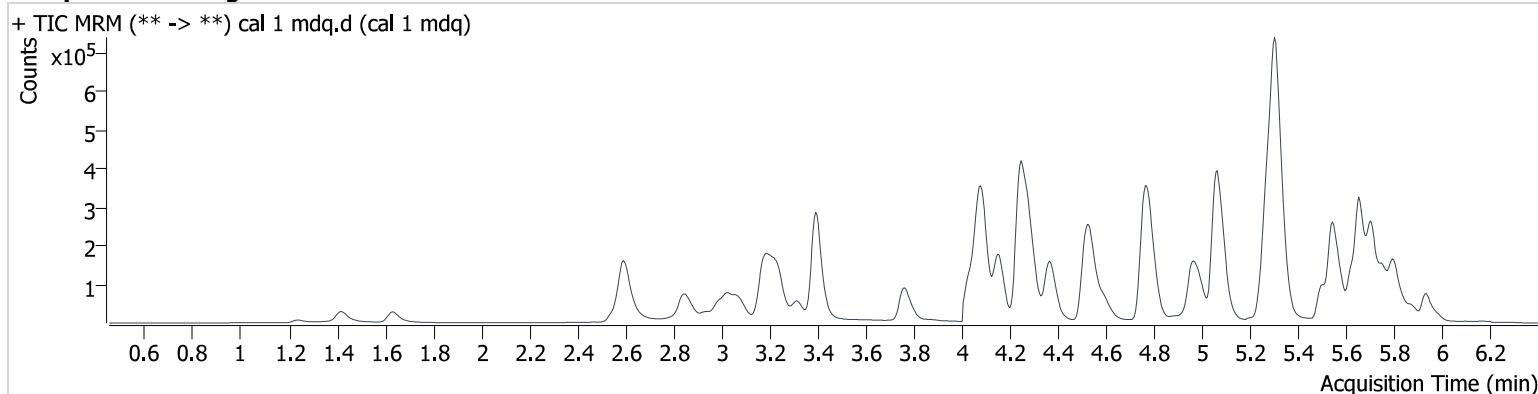
# AM #28 Multi-Drug Quant. Results

**Batch results** D:\MassHunter\Data\2024\am 27-28\020124\QuantResults\am28.batch.bin  
**Calibration Last Update** 2/7/2024 10:37:12 AM

**Instrument** 69679  
**Type** Cal  
**Acq. Method** mdqp1 121523.m  
**Sample Position** P2-A5  
**Injection Volume** 3  
**Acq. Date-Time** 2/1/2024 1:50:49 PM  
**Sample Info.**

**Data File** cal 1 mdq.d  
**Sample** cal 1 mdq  
**Operator** Anne Nord  
**Comment** Only drugs and concentrations listed on the laboratory report itself are appropriate to be used for interpretation purposes. Any drugs or values in the notes but not included on the report are used by laboratory personnel to make determinations/reach conclusions within the confines of the methods.

## Sample Chromatogram



Name	RT	Resp.	S/N	Ratio	S/N	ISTD Resp.	Final Conc.
Amphetamine	3.068	27657	∞	272.95	4373.8	157417	4.816 ng/ml
Benzoylcegonine	3.893	1118	4122.9	46.92	74.5	7916	5.068 ng/ml
Bupropion	4.792	61006	8767.8	71.42	18701.7	313135	4.892 ng/ml
Citalopram	5.255	47462	3445.2	35.99	∞	395444	4.998 ng/ml
Cocaine	4.286	38048	62858.7	42.57	503055.0	489550	4.813 ng/ml
Cyclobenzaprine	5.624	49961	25520.3	9.46	7935.4	310567	4.918 ng/ml
Dextromethorphan	5.288	30405	1517.4	71.81	∞	320742	5.100 ng/ml
Dextrorphan	4.156	41053	∞	44.65	837.2	441816	5.153 ng/ml
Diazepam	5.940	18045	16075.7	86.81	∞	171468	5.066 ng/ml
Dihydrocodeine	2.585	6930	3533.8	66.23	321.6	81335	4.738 ng/ml
Diphenhydramine	5.310	53684	7575.6	295.05	299400.4	1418498	5.005 ng/ml
Doxylamine	4.543	134929	8382.8	92.82	13294.5	780283	4.829 ng/ml
Fentanyl	5.078	4894	591.7	131.07	573.1	447793	0.521 ng/ml
Fluorofentanyl	5.135	4011	2264.3	119.42	133.6	4645	0.509 ng/ml
Hydrocodone	3.055	16837	757.3	40.32	324.5	181472	4.891 ng/ml
Lorazepam	5.737	2225	∞	37.23	16.7	41549	5.112 ng/ml
Methamphetamine	3.242	121185	∞	34.77	229.6	442417	4.773 ng/ml
Morphine	1.241	2177	634.5	20.71	52.4	6727	4.925 ng/ml
Nordiazepam	5.884	11961	4213.5	60.79	1023.3	79498	5.057 ng/ml
Norfentanyl	4.101	3122	395.9	30.46	1080.4	709669	0.514 ng/ml
Norhydrocodone	3.112	2339	819.3	21.85	∞	42145	5.301 ng/ml
Noroxycodone	2.957	9668	∞	52.80	12227.9	67063	5.007 ng/ml
O-Desmethylvenlafaxine	4.099	27716	495.2	553.41	3090.4	19086	5.004 ng/ml
Oxazepam	5.744	3755	154.2	76.95	161.0	41549	4.796 ng/ml
Oxycodone	2.875	29379	1133.6	31.39	689.7	259097	4.874 ng/ml
Promethazine	5.550	49516	110498.4	45.38	1203.0	610775	5.099 ng/ml
Quetiapine	5.505	61026	9572.4	67.53	8947.2	196942	4.905 ng/ml
Temazepam	5.811	23374	2209.3	28.15	80.6	213753	5.059 ng/ml
Trazodone	4.995	46779	∞	126.84	3793.3	501233	5.043 ng/ml
Venlafaxine	5.064	71032	43711.3	37.38	1860.5	789150	5.114 ng/ml
Zolpidem	4.780	99075	6224.5	28.83	3356.5	798474	4.868 ng/ml

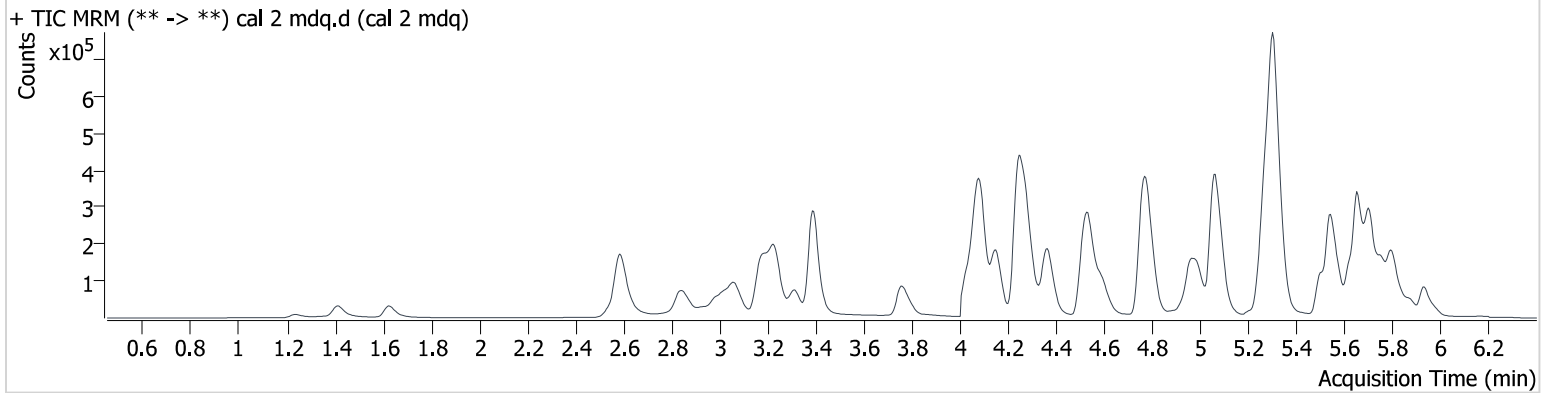
# AM #28 Multi-Drug Quant. Results

Batch results D:\MassHunter\Data\2024\am 27-28\020124\QuantResults\am28.batch.bin  
Calibration Last Update 2/7/2024 10:37:12 AM

Instrument 69679  
Type Cal  
Acq. Method mdqp1 121523.m  
Sample Position P2-B5  
Injection Volume 3  
Acq. Date-Time 2/1/2024 1:59:41 PM  
Sample Info.

Data File cal 2 mdq.d  
Sample cal 2 mdq  
Operator Anne Nord  
Comment Only drugs and concentrations listed on the laboratory report itself are appropriate to be used for interpretation purposes. Any drugs or values in the notes but not included on the report are used by laboratory personnel to make determinations/reach conclusions within the confines of the methods.

## Sample Chromatogram



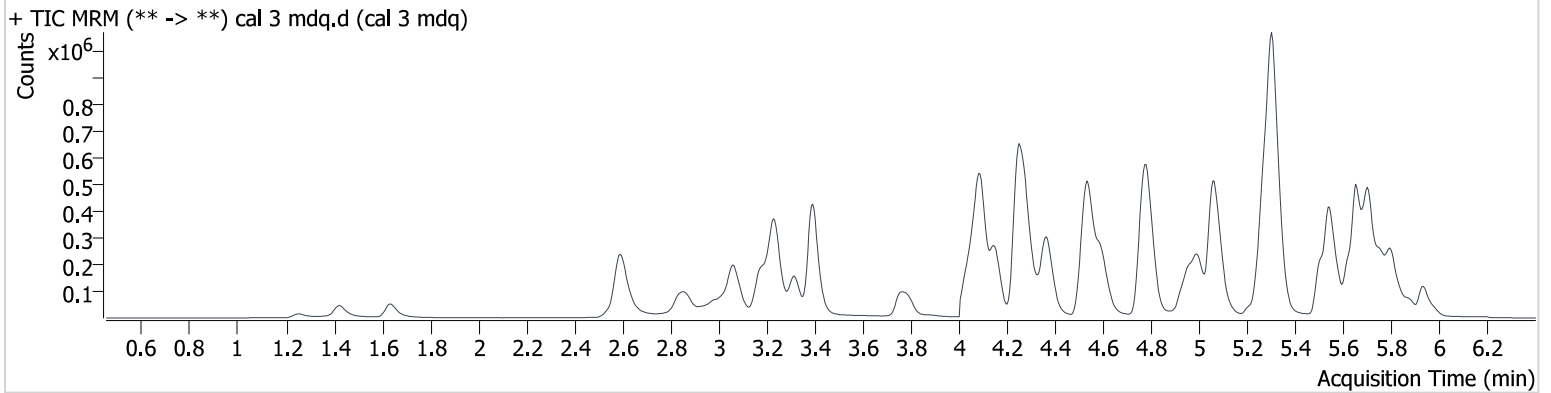
Name	RT	Resp.	S/N	Ratio	S/N	ISTD Resp.	Final Conc.
Amphetamine	3.063	49984	2102.9	269.59	7771.0	142543	10.565 ng/ml
Benzoylcegonine	3.888	2193	5874.1	41.55	143.3	7443	10.279 ng/ml
Bupropion	4.787	109479	9585.5	73.90	16149.6	287345	10.228 ng/ml
Citalopram	5.255	87626	∞	36.69	59650.0	368361	9.955 ng/ml
Cocaine	4.281	72745	85473.3	42.51	24199.0	455315	10.452 ng/ml
Cyclobenzaprine	5.624	93134	53307.0	9.04	4565.3	279666	10.222 ng/ml
Dextromethorphan	5.288	54317	5417.2	75.66	81438.7	297984	9.582 ng/ml
Dextrorphan	4.156	74674	8201.8	44.56	32100.5	400169	10.095 ng/ml
Diazepam	5.940	34000	7581.9	88.72	13970.5	163158	9.832 ng/ml
Dihydrocodeine	2.575	13319	840.8	67.51	1752.6	77715	10.444 ng/ml
Diphenhydramine	5.315	97179	9098.8	304.63	29299.4	1324535	9.874 ng/ml
Doxylamine	4.543	248495	13582.4	92.71	20406.5	703770	10.326 ng/ml
Fentanyl	5.073	8244	698.1	139.58	1894.8	395598	0.951 ng/ml
Fluorofentanyl	5.124	7630	670.1	109.61	24.7	4172	0.998 ng/ml
Hydrocodone	3.050	30805	861.3	39.04	4299.0	168087	10.155 ng/ml
Lorazepam	5.737	4782	335.6	34.43	82.1	40017	9.842 ng/ml
Methamphetamine	3.237	184196	12323.0	36.15	2072.9	407716	10.554 ng/ml
Morphine	1.246	4436	1113.8	19.70	164.8	6797	10.079 ng/ml
Nordiazepam	5.884	21947	4301.5	62.70	2365.2	75896	9.753 ng/ml
Norfentanyl	4.101	5537	362.1	32.51	18238.8	664717	0.967 ng/ml
Norhydrocodone	3.107	4067	766.8	23.40	∞	39119	9.280 ng/ml
Noroxycodone	2.952	16884	∞	55.52	∞	60660	9.802 ng/ml
O-Desmethylvenlafaxine	4.099	51851	2229.4	542.13	5585.6	17834	10.039 ng/ml
Oxazepam	5.744	8484	1460.6	64.97	55.5	40017	10.890 ng/ml
Oxycodone	2.865	54306	33196.2	31.62	4472.0	237416	10.241 ng/ml
Promethazine	5.545	94333	226085.6	44.11	1369.3	567877	9.911 ng/ml
Quetiapine	5.505	114879	42663.2	65.68	11008.1	182832	10.121 ng/ml
Temazepam	5.806	46399	1526.9	31.15	2028.4	207460	9.847 ng/ml
Trazodone	4.995	86432	14751.2	126.55	4022.7	462811	9.886 ng/ml
Venlafaxine	5.064	131012	783640.5	38.12	42972.2	722972	9.772 ng/ml
Zolpidem	4.780	182176	27236.1	29.88	∞	743525	10.133 ng/ml

# AM #28 Multi-Drug Quant. Results

**Batch results** D:\MassHunter\Data\2024\am 27-28\020124\QuantResults\am28.batch.bin  
**Calibration Last Update** 2/7/2024 10:37:12 AM

<b>Instrument</b>	69679	<b>Data File</b>	cal 3 mdq.d
<b>Type</b>	Cal	<b>Sample</b>	cal 3 mdq
<b>Acq. Method</b>	mdqp1 121523.m	<b>Operator</b>	Anne Nord
<b>Sample Position</b>	P2-C5	<b>Comment</b>	Only drugs and concentrations listed on the laboratory report itself are appropriate to be used for interpretation purposes. Any drugs or values in the notes but not included on the report are used by laboratory personnel to make determinations/reach conclusions within the confines of the methods.
<b>Injection Volume</b>	3		
<b>Acq. Date-Time</b>	2/1/2024 2:08:24 PM		
<b>Sample Info.</b>			

## Sample Chromatogram



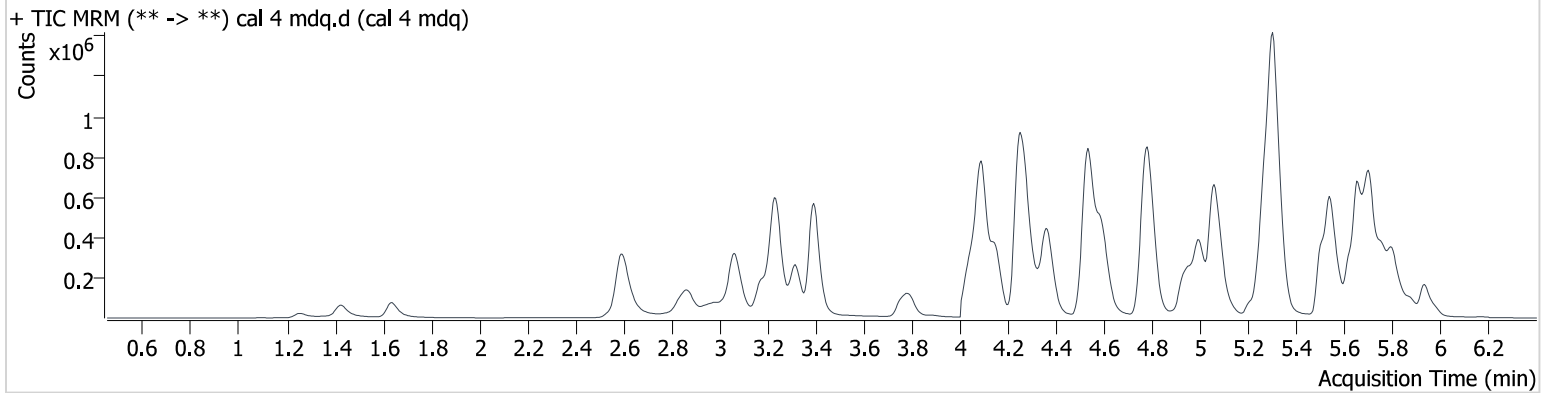
Name	RT	Resp.	S/N	Ratio	S/N	ISTD Resp.	Final Conc.
Amphetamine	3.069	125869	4986.9	269.63	154542.8	150898	26.450 ng/ml
Benzoylcgonine	3.888	6311	10956.6	40.18	1007.3	8776	24.697 ng/ml
Bupropion	4.792	285697	36149.9	76.32	30782.4	308583	25.845 ng/ml
Citalopram	5.255	223982	53105.9	37.19	∞	375331	25.047 ng/ml
Cocaine	4.281	192584	150134.3	42.84	∞	496724	26.117 ng/ml
Cyclobenzaprine	5.624	252288	13759.2	9.43	6619.1	303570	25.569 ng/ml
Dextromethorphan	5.288	144464	1772534.7	73.43	352539.2	298385	25.045 ng/ml
Dextrorphan	4.156	201247	29105.0	44.47	18487.4	431548	24.848 ng/ml
Diazepam	5.935	87358	11540.8	84.93	29409.7	167332	24.324 ng/ml
Dihydrocodeine	2.580	35887	669.6	67.20	466.6	83688	27.486 ng/ml
Diphenhydramine	5.310	260617	50579.6	289.65	26950.1	1399859	25.338 ng/ml
Doxylamine	4.538	688653	33613.7	92.82	79626.4	790182	26.145 ng/ml
Fentanyl	5.078	22380	8588.2	131.91	2780.6	417758	2.374 ng/ml
Fluorofentanyl	5.130	21372	13023.5	113.38	57.9	4627	2.412 ng/ml
Hydrocodone	3.050	82238	3808.1	39.28	2528.2	179432	26.154 ng/ml
Lorazepam	5.737	11146	∞	36.82	351.0	36575	23.123 ng/ml
Methamphetamine	3.237	429271	10421.7	38.38	∞	453400	26.645 ng/ml
Morphine	1.257	12563	3305.3	18.46	334.5	7458	26.243 ng/ml
Nordiazepam	5.884	53849	3298.4	61.75	26242.2	72175	25.220 ng/ml
Norfentanyl	4.101	13853	1028.4	33.58	7284.8	672415	2.381 ng/ml
Norhydrocodone	3.101	12021	1366.4	21.30	∞	44563	22.885 ng/ml
Noroxycodone	2.952	47729	∞	54.07	∞	66562	25.483 ng/ml
O-Desmethylvenlafaxine	4.094	138410	1497.1	542.20	27301.4	19397	24.666 ng/ml
Oxazepam	5.744	17412	427.3	70.68	113.0	36575	24.120 ng/ml
Oxycodone	2.870	147111	2517.4	29.53	6251.0	258783	26.048 ng/ml
Promethazine	5.545	251460	∞	44.49	233529.5	617137	23.567 ng/ml
Quetiapine	5.505	289832	35355.1	69.10	33938.1	183048	25.762 ng/ml
Temazepam	5.806	111073	10200.7	30.65	1501.6	191517	24.773 ng/ml
Trazodone	5.000	224524	25379.7	128.88	∞	479547	24.474 ng/ml
Venlafaxine	5.059	355427	33693.2	36.64	6827.5	776029	23.909 ng/ml
Zolpidem	4.780	487088	122184.7	29.79	24601.4	785984	26.445 ng/ml

# AM #28 Multi-Drug Quant. Results

**Batch results** D:\MassHunter\Data\2024\am 27-28\020124\QuantResults\am28.batch.bin  
**Calibration Last Update** 2/7/2024 10:37:12 AM

<b>Instrument</b>	69679	<b>Data File</b>	cal 4 mdq.d
<b>Type</b>	Cal	<b>Sample</b>	cal 4 mdq
<b>Acq. Method</b>	mdqp1 121523.m	<b>Operator</b>	Anne Nord
<b>Sample Position</b>	P2-D5	<b>Comment</b>	Only drugs and concentrations listed on the laboratory report itself are appropriate to be used for interpretation purposes. Any drugs or values in the notes but not included on the report are used by laboratory personnel to make determinations/reach conclusions within the confines of the methods.
<b>Injection Volume</b>	3		
<b>Acq. Date-Time</b>	2/1/2024 2:17:06 PM		
<b>Sample Info.</b>			

## Sample Chromatogram



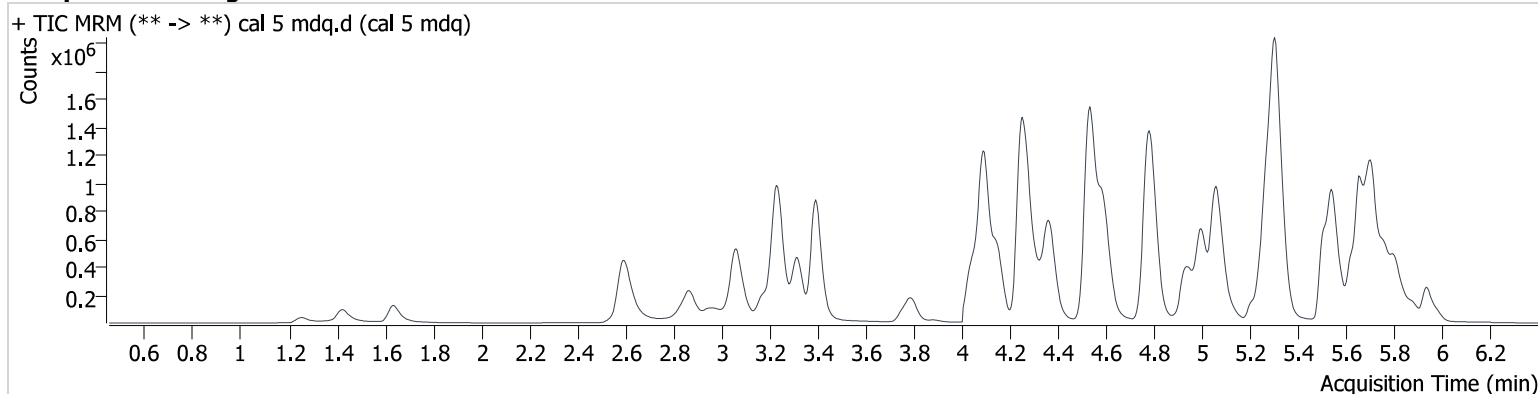
Name	RT	Resp.	S/N	Ratio	S/N	ISTD Resp.	Final Conc.
Amphetamine	3.068	221621	12922.9	267.17	23076.7	140850	50.741 ng/ml
Benzoylcegonine	3.888	11502	52423.0	40.28	493.0	7932	49.526 ng/ml
Bupropion	4.787	540914	64247.8	75.38	19074.8	293459	52.140 ng/ml
Citalopram	5.250	425372	35146.6	37.84	276448.9	355149	50.321 ng/ml
Cocaine	4.281	368864	21568.9	43.40	60003.5	475065	52.833 ng/ml
Cyclobenzaprine	5.629	475973	32989.0	9.28	17963.8	290061	50.524 ng/ml
Dextromethorphan	5.283	273074	33598.3	74.38	∞	282227	49.808 ng/ml
Dextrorphan	4.150	374898	356672.3	45.53	21753.4	405755	48.984 ng/ml
Diazepam	5.940	172026	6546.6	82.75	∞	158138	50.462 ng/ml
Dihydrocodeine	2.580	69834	1021.2	66.23	1200.9	81759	55.642 ng/ml
Diphenhydramine	5.310	493912	70300.4	298.67	131246.8	1306560	51.638 ng/ml
Doxylamine	4.538	1338306	∞	92.38	98184.8	755457	53.606 ng/ml
Fentanyl	5.078	43393	3010.8	135.17	3573.0	407283	4.676 ng/ml
Fluorofentanyl	5.130	42458	665.5	116.80	1199.0	4781	4.572 ng/ml
Hydrocodone	3.050	156457	2973.4	41.54	∞	173768	51.868 ng/ml
Lorazepam	5.737	19467	∞	37.86	483.5	29533	48.534 ng/ml
Methamphetamine	3.237	777782	∞	37.70	∞	439061	53.453 ng/ml
Morphine	1.257	22613	3083.3	19.07	1258.3	6925	51.007 ng/ml
Nordiazepam	5.884	98939	17898.0	59.85	5531.1	68113	49.134 ng/ml
Norfentanyl	4.101	25451	2328.8	29.85	8901.5	599432	4.898 ng/ml
Norhydrocodone	3.101	23984	3495.4	23.02	1460.6	44069	45.411 ng/ml
Noroxycodone	2.952	89267	∞	53.47	1304.3	61762	51.512 ng/ml
O-Desmethylvenlafaxine	4.094	259098	8439.7	542.17	30117.8	17937	49.951 ng/ml
Oxazepam	5.744	30277	636.8	67.91	222.0	29533	51.635 ng/ml
Oxycodone	2.870	282646	∞	30.04	∞	252362	51.710 ng/ml
Promethazine	5.545	501981	959533.8	42.64	25319.7	595092	48.242 ng/ml
Quetiapine	5.505	595393	339598.6	66.19	110084.3	181978	53.414 ng/ml
Temazepam	5.806	194321	531229.7	29.38	644.2	166961	49.233 ng/ml
Trazodone	5.000	451865	104560.3	128.06	74467.5	463163	50.776 ng/ml
Venlafaxine	5.059	697223	53873.9	36.32	4763.8	737511	48.801 ng/ml
Zolpidem	4.780	944854	55765.4	30.15	31560.6	763734	53.325 ng/ml

# AM #28 Multi-Drug Quant. Results

**Batch results** D:\MassHunter\Data\2024\am 27-28\020124\QuantResults\am28.batch.bin  
**Calibration Last Update** 2/7/2024 10:37:12 AM

<b>Instrument</b>	69679	<b>Data File</b>	cal 5 mdq.d
<b>Type</b>	Cal	<b>Sample</b>	cal 5 mdq
<b>Acq. Method</b>	mdqp1 121523.m	<b>Operator</b>	Anne Nord
<b>Sample Position</b>	P2-E5	<b>Comment</b>	Only drugs and concentrations listed on the laboratory report itself are appropriate to be used for interpretation purposes. Any drugs or values in the notes but not included on the report are used by laboratory personnel to make determinations/reach conclusions within the confines of the methods.
<b>Injection Volume</b>	3		
<b>Acq. Date-Time</b>	2/1/2024 2:25:48 PM		
<b>Sample Info.</b>			

## Sample Chromatogram



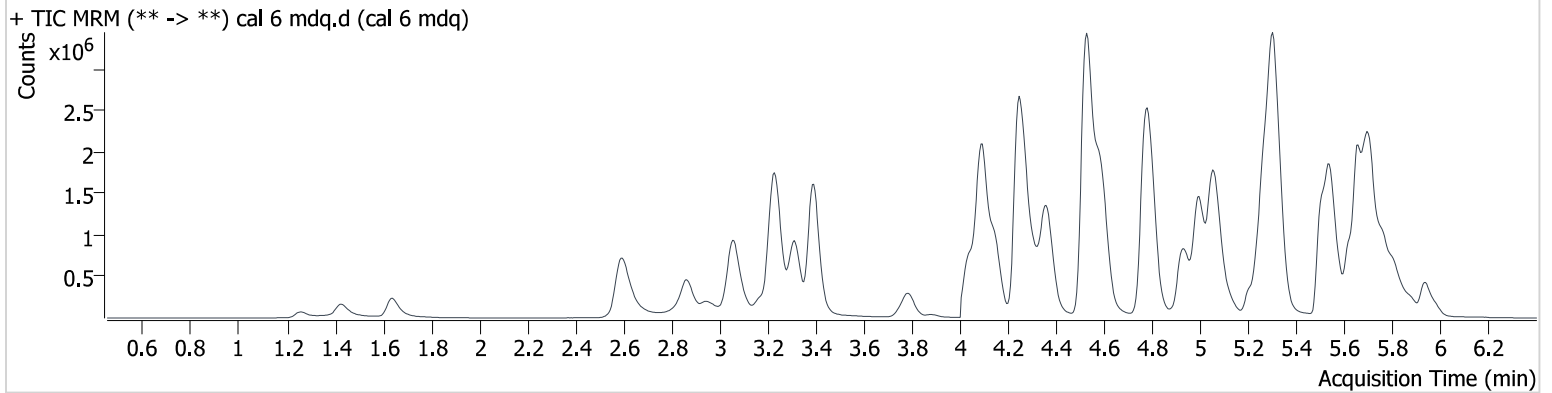
Name	RT	Resp.	S/N	Ratio	S/N	ISTD Resp.	Final Conc.
Amphetamine	3.063	384446	256126.9	269.77	21181.9	137756	90.737 ng/ml
Benzoylcegonine	3.888	24047	59516.9	41.49	4948.1	8301	98.668 ng/ml
Bupropion	4.787	1016494	139790.7	75.04	135937.6	288730	100.217 ng/ml
Citalopram	5.250	785886	128843.1	37.68	307724.6	317314	104.106 ng/ml
Cocaine	4.276	698020	54832.2	43.18	1114161.4	466192	102.371 ng/ml
Cyclobenzaprine	5.624	878575	257902.1	9.58	4072.8	272451	99.326 ng/ml
Dextromethorphan	5.283	505406	35672.5	74.37	290550.8	256335	101.243 ng/ml
Dextrorphan	4.151	737672	104004.4	44.80	18527.7	393512	99.124 ng/ml
Diazepam	5.941	321546	∞	86.15	∞	150368	98.999 ng/ml
Dihydrocodeine	2.575	126236	608.8	66.26	3860.3	79227	104.578 ng/ml
Diphenhydramine	5.310	884303	42376.7	308.30	∞	1212463	99.798 ng/ml
Doxylamine	4.533	2670099	232906.6	93.39	78214.4	775452	104.615 ng/ml
Fentanyl	5.073	85006	10214.5	133.37	8544.1	381742	9.723 ng/ml
Fluorofentanyl	5.124	82859	4214.4	114.92	228.0	4371	9.677 ng/ml
Hydrocodone	3.050	303311	∞	38.22	∞	170245	103.129 ng/ml
Lorazepam	5.737	34031	∞	34.94	224.9	23587	104.719 ng/ml
Methamphetamine	3.237	1435609	∞	36.82	338346.3	439441	102.064 ng/ml
Morphine	1.257	42999	4530.6	19.91	1403.6	6770	99.344 ng/ml
Nordiazepam	5.884	169385	45968.9	60.59	13919.4	56293	101.818 ng/ml
Norfentanyl	4.101	43686	10846.7	30.77	34404.6	516551	9.748 ng/ml
Norhydrocodone	3.101	53136	5900.8	24.67	∞	43739	100.447 ng/ml
Noroxycodone	2.947	171858	∞	52.09	∞	59385	103.288 ng/ml
O-Desmethylvenlafaxine	4.094	483961	2645.6	535.52	63699.8	16941	98.810 ng/ml
Oxazepam	5.744	47370	3707.0	68.94	378.5	23587	100.896 ng/ml
Oxycodone	2.865	551971	∞	29.75	∞	245956	104.015 ng/ml
Promethazine	5.545	995848	555856.7	42.98	11244.0	578440	97.927 ng/ml
Quetiapine	5.505	1126810	635325.7	66.57	214483.9	179941	102.387 ng/ml
Temazepam	5.811	317760	25036.8	31.03	1816.1	136217	98.198 ng/ml
Trazodone	5.000	875390	25415.9	128.34	141217.6	459111	99.040 ng/ml
Venlafaxine	5.059	1388433	25936.9	36.29	∞	725276	98.292 ng/ml
Zolpidem	4.780	1823601	1342984.3	30.12	33370.3	748651	105.511 ng/ml

# AM #28 Multi-Drug Quant. Results

**Batch results** D:\MassHunter\Data\2024\am 27-28\020124\QuantResults\am28.batch.bin  
**Calibration Last Update** 2/7/2024 10:37:12 AM

<b>Instrument</b>	69679	<b>Data File</b>	cal 6 mdq.d
<b>Type</b>	Cal	<b>Sample</b>	cal 6 mdq
<b>Acq. Method</b>	mdqp1 121523.m	<b>Operator</b>	Anne Nord
<b>Sample Position</b>	P2-F5	<b>Comment</b>	Only drugs and concentrations listed on the laboratory report itself are appropriate to be used for interpretation purposes. Any drugs or values in the notes but not included on the report are used by laboratory personnel to make determinations/reach conclusions within the confines of the methods.
<b>Injection Volume</b>	3		
<b>Acq. Date-Time</b>	2/1/2024 2:34:31 PM		
<b>Sample Info.</b>			

## Sample Chromatogram



Name	RT	Resp.	S/N	Ratio	S/N	ISTD Resp.	Final Conc.
Amphetamine	3.063	703010	45911.3	262.42	34649.8	124974	183.865 ng/ml
Benzoylcegonine	3.883	57216	∞	42.53	2173.6	7669	253.685 ng/ml
Bupropion	4.787	2115552	171211.5	72.94	105062.6	244606	247.206 ng/ml
Citalopram	5.244	1578703	73249.5	38.89	∞	269367	246.422 ng/ml
Cocaine	4.276	1455432	416452.3	43.80	55967.0	401224	248.768 ng/ml
Cyclobenzaprine	5.624	1906437	34538.7	10.11	29235.4	230277	255.066 ng/ml
Dextromethorphan	5.283	1004405	753506.4	75.01	169356.7	202330	254.536 ng/ml
Dextrorphan	4.145	1623416	163246.3	45.27	196569.8	346092	247.654 ng/ml
Diazepam	5.940	678152	37846.6	84.38	17417.6	126261	248.349 ng/ml
Dihydrocodeine	2.575	257679	18065.7	66.33	2174.1	74209	228.966 ng/ml
Diphenhydramine	5.310	1791088	2237902.4	320.67	345112098.6	1006558	243.746 ng/ml
Doxylamine	4.528	6250265	108280.6	95.50	∞	752379	253.027 ng/ml
Fentanyl	5.073	196321	28418.3	136.83	24696.3	339415	25.182 ng/ml
Fluorofentanyl	5.124	229294	69483.3	110.81	3839.7	4604	25.309 ng/ml
Hydrocodone	3.045	693390	∞	39.58	∞	158860	253.388 ng/ml
Lorazepam	5.737	59516	3054793054 1824.0	39.94	1338.5	16322	262.721 ng/ml
Methamphetamine	3.231	2853384	∞	39.23	8823.8	435916	208.647 ng/ml
Morphine	1.257	89987	4436.7	19.56	1591.3	5888	239.226 ng/ml
Nordiazepam	5.884	291011	53692.2	62.36	162262.3	39952	246.528 ng/ml
Norfentanyl	4.101	72396	10473.1	30.26	42255.4	338646	24.629 ng/ml
Norhydrocodone	3.101	122049	∞	27.05	3724.8	39231	256.059 ng/ml
Noroxycodone	2.947	373619	∞	51.74	∞	52160	255.868 ng/ml
O-Desmethylvenlafaxine	4.094	930991	1566.5	540.63	83957.6	12783	251.927 ng/ml
Oxazepam	5.744	82048	22237.6	69.80	2463.5	16322	252.146 ng/ml
Oxycodone	2.860	1263030	5167.1	29.42	∞	234255	250.461 ng/ml
Promethazine	5.545	2420355	1776527.9	40.20	153385.1	549441	249.771 ng/ml
Quetiapine	5.505	2625427	780201.3	63.68	1111324.5	166761	257.670 ng/ml
Temazepam	5.811	521676	145119.5	31.48	3247.8	88190	248.275 ng/ml
Trazodone	4.995	2042220	86005.0	130.20	635149.4	419534	252.532 ng/ml
Venlafaxine	5.059	3309852	207457.8	36.30	123513.7	675958	250.607 ng/ml
Zolpidem	4.780	3997862	286648.9	30.71	79652.2	699361	248.332 ng/ml

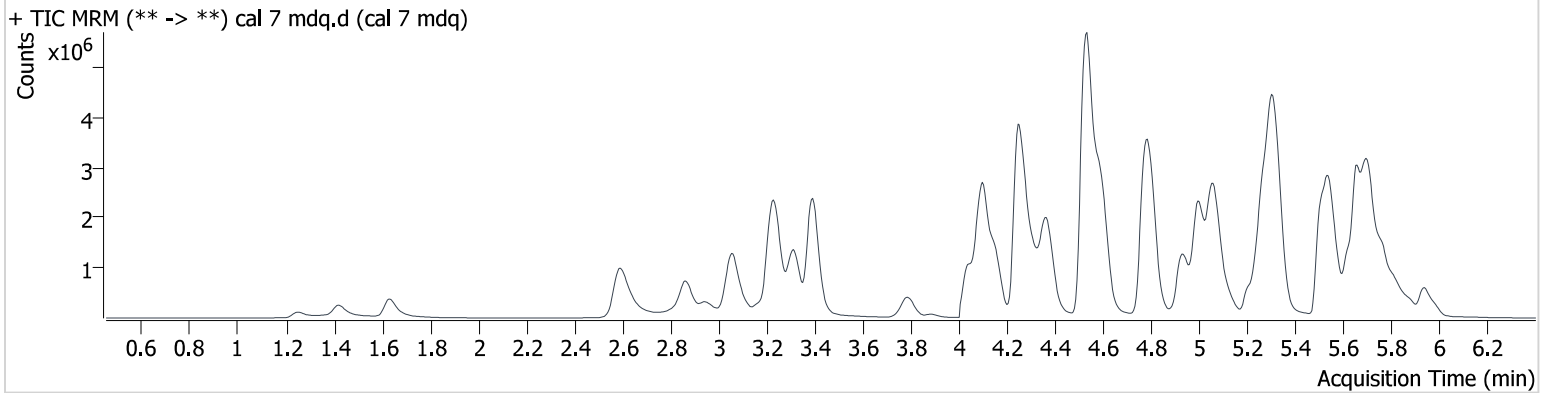


# AM #28 Multi-Drug Quant. Results

Batch results D:\MassHunter\Data\2024\am 27-28\020124\QuantResults\am28.batch.bin  
Calibration Last Update 2/7/2024 10:37:12 AM

<b>Instrument</b>	69679	<b>Data File</b>	cal 7 mdq.d
<b>Type</b>	Cal	<b>Sample</b>	cal 7 mdq
<b>Acq. Method</b>	mdqp1 121523.m	<b>Operator</b>	Anne Nord
<b>Sample Position</b>	P2-G5	<b>Comment</b>	Only drugs and concentrations listed on the laboratory report itself are appropriate to be used for interpretation purposes. Any drugs or values in the notes but not included on the report are used by laboratory personnel to make determinations/reach conclusions within the confines of the methods.
<b>Injection Volume</b>	3		
<b>Acq. Date-Time</b>	2/1/2024 2:43:13 PM		
<b>Sample Info.</b>			

## Sample Chromatogram



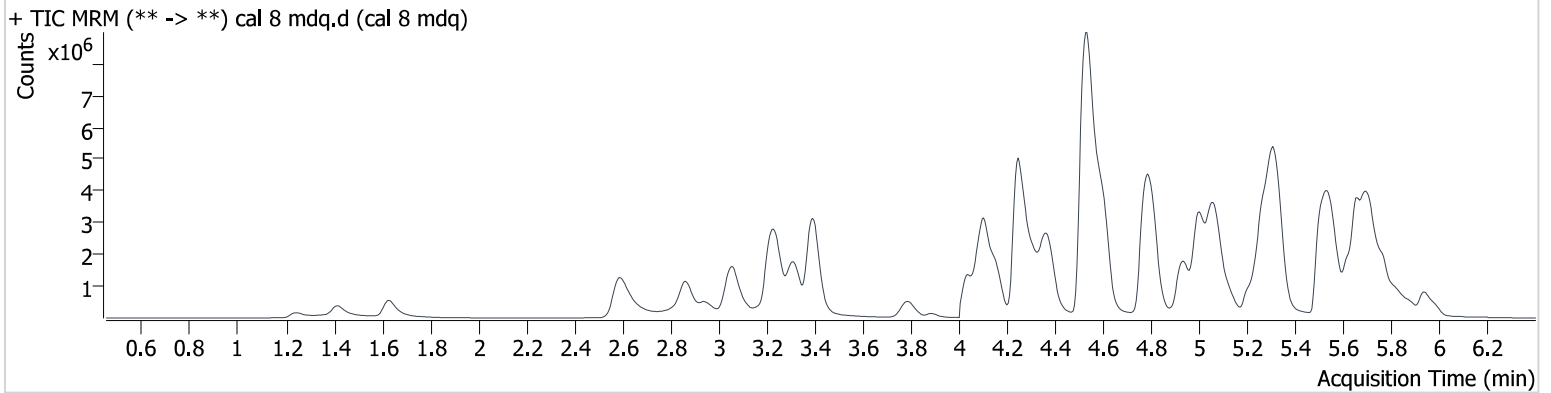
Name	RT	Resp.	S/N	Ratio	S/N	ISTD Resp.	Final Conc.
Amphetamine	3.063	979105	48672.7	257.29	168371.6	109390	293.120 ng/ml
Benzoylcegonine	3.888	118754	139469.6	41.82	5669.7	8396	480.689 ng/ml
Bupropion	4.792	3133519	242172.5	70.68	177782.0	192603	465.630 ng/ml
Citalopram	5.244	2246451	149812.2	38.30	∞	190611	495.583 ng/ml
Cocaine	4.281	2193688	166864.7	43.90	∞	313315	480.650 ng/ml
Cyclobenzaprine	5.624	2850413	2727250.2	10.20	117086.5	178106	493.106 ng/ml
Dextromethorphan	5.283	1413241	204974.8	76.20	12632405.9	145545	497.641 ng/ml
Dextrorphan	4.150	2615237	1350394.1	44.71	74784.7	275850	500.291 ng/ml
Diazepam	5.940	1056912	∞	84.90	∞	97235	502.386 ng/ml
Dihydrocodeine	2.570	418403	9976.3	65.75	1599.4	66280	416.996 ng/ml
Diphenhydramine	5.315	2628996	2231137.4	323.59	841393.5	726480	495.897 ng/ml
Doxylamine	4.533	10836788	773409.3	95.57	6828642.1	689604	479.036 ng/ml
Fentanyl	5.078	319134	37039.6	143.88	46393.2	267977	51.799 ng/ml
Fluorofentanyl	5.124	446483	3615.4	110.32	5994.6	4702	48.196 ng/ml
Hydrocodone	3.045	1154227	∞	40.47	∞	138289	484.999 ng/ml
Lorazepam	5.737	89230	∞	37.95	2282.4	12483	513.791 ng/ml
Methamphetamine	3.231	4275521	5560.2	38.39	∞	411939	333.254 ng/ml
Morphine	1.252	172862	11045.4	16.44	1266.7	5129	527.709 ng/ml
Nordiazepam	5.884	406073	10022.5	61.29	4716.5	26821	512.465 ng/ml
Norfentanyl	4.106	86482	26533.3	29.73	189190.9	195831	50.868 ng/ml
Norhydrocodone	3.101	196800	16229.5	27.37	2990.0	30583	528.844 ng/ml
Noroxycodone	2.947	628179	∞	51.49	∞	44876	500.172 ng/ml
O-Desmethylvenlafaxine	4.099	1255663	8041.3	541.43	74751.2	8200	529.728 ng/ml
Oxazepam	5.744	121171	11936.4	70.58	10140.5	12483	486.644 ng/ml
Oxycodone	2.860	2189653	∞	29.40	∞	210349	483.932 ng/ml
Promethazine	5.545	4305660	113265.6	39.99	∞	472066	516.607 ng/ml
Quetiapine	5.505	4152136	∞	63.80	674108.3	135844	500.411 ng/ml
Temazepam	5.811	674687	1831447.7	31.78	125016.0	56580	499.998 ng/ml
Trazodone	5.000	3338352	262989.1	131.39	254719.6	342552	505.370 ng/ml
Venlafaxine	5.059	5725921	390896.9	35.36	1119639.9	568577	514.873 ng/ml
Zolpidem	4.780	6501433	953704.3	30.64	70684.9	586557	482.011 ng/ml

# AM #28 Multi-Drug Quant. Results

**Batch results** D:\MassHunter\Data\2024\am 27-28\020124\QuantResults\am28.batch.bin  
**Calibration Last Update** 2/7/2024 10:37:12 AM

<b>Instrument</b>	69679	<b>Data File</b>	cal 8 mdq.d
<b>Type</b>	Cal	<b>Sample</b>	cal 8 mdq
<b>Acq. Method</b>	mdqp1 121523.m	<b>Operator</b>	Anne Nord
<b>Sample Position</b>	P2-H5	<b>Comment</b>	Only drugs and concentrations listed on the laboratory report itself are appropriate to be used for interpretation purposes. Any drugs or values in the notes but not included on the report are used by laboratory personnel to make determinations/reach conclusions within the confines of the methods.
<b>Injection Volume</b>	3		
<b>Acq. Date-Time</b>	2/1/2024 3:00:39 PM		
<b>Sample Info.</b>			

## Sample Chromatogram



Name	RT	Resp.	S/N	Ratio	S/N	ISTD Resp.	Final Conc.
Amphetamine	3.068	1207784	34875.3	259.78	822786.9	92101	429.905 ng/ml
Benzoylcegonine	3.888	233703	1213877.8	42.56	13899.9	7805	1017.389 ng/ml
Bupropion	4.797	3900893	444185.3	69.95	181482.1	135441	824.836 ng/ml
Citalopram	5.244	2700949	445039.3	39.53	∞	116061	978.634 ng/ml
Cocaine	4.276	2888997	62841.1	43.79	3930847978 935550.0	217848	910.864 ng/ml
Cyclobenzaprine	5.624	3829032	41095.2	10.33	19710.7	122742	961.226 ng/ml
Dextromethorphan	5.288	1758507	139589.6	74.38	95224.9	90281	998.015 ng/ml
Dextrorphan	4.150	3736370	293265.1	45.01	496403.1	196361	1003.851 ng/ml
Diazepam	5.940	1566992	∞	84.69	∞	70088	1033.132 ng/ml
Dihydrocodeine	2.570	627197	24645.3	66.87	5719.1	57778	717.723 ng/ml
Diphenhydramine	5.325	3359946	99413.2	327.76	4772919.1	460260	1000.539 ng/ml
Doxylamine	4.533	18259778	3198888.9	97.71	∞	642069	867.285 ng/ml
Fentanyl	5.083	500462	63688.4	147.37	132573.0	196504	110.724 ng/ml
Fluorofentanyl	5.130	849363	879891.4	109.67	1160.3	3709	116.130 ng/ml
Hydrocodone	3.045	1776476	∞	40.64	∞	113751	907.934 ng/ml
Lorazepam	5.737	110172	107452.9	40.63	795.9	8135	972.237 ng/ml
Methamphetamine	3.231	5773948	∞	38.09	∞	364129	511.320 ng/ml
Morphine	1.246	239830	∞	20.68	5782.2	4032	931.435 ng/ml
Nordiazepam	5.890	546036	86530.9	61.19	8561.5	18622	992.541 ng/ml
Norfentanyl	4.111	86162	∞	29.34	39489.8	90646	109.481 ng/ml
Norhydrocodone	3.101	297753	11374.0	27.49	19917.1	22196	1101.663 ng/ml
Noroxycodone	2.942	972902	∞	50.95	∞	38114	912.193 ng/ml
O-Desmethylvenlafaxine	4.104	1481164	50185.4	540.40	151230.6	5369	954.265 ng/ml
Oxazepam	5.744	156407	5625.6	71.58	21518.9	8135	963.570 ng/ml
Oxycodone	2.860	3655396	∞	29.17	∞	185779	915.078 ng/ml
Promethazine	5.545	6851524	12159251.0	38.76	138955.0	362501	1069.988 ng/ml
Quetiapine	5.505	6417630	1162940.0	62.63	1418575.6	117595	893.610 ng/ml
Temazepam	5.816	788570	87206.3	31.51	59175.4	31389	1052.863 ng/ml
Trazodone	5.000	4882086	145540.5	130.25	292574.3	253850	997.115 ng/ml
Venlafaxine	5.059	8619238	1447626.4	35.07	1591744.0	418459	1052.537 ng/ml
Zolpidem	4.785	9697114	831055.0	30.51	207500.0	481375	876.463 ng/ml